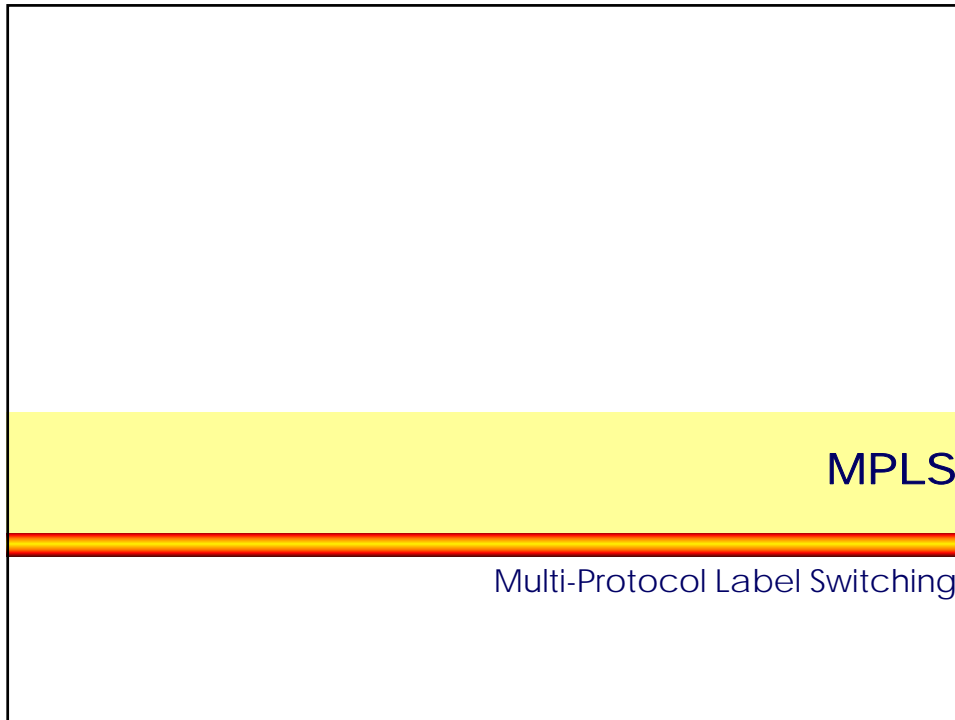


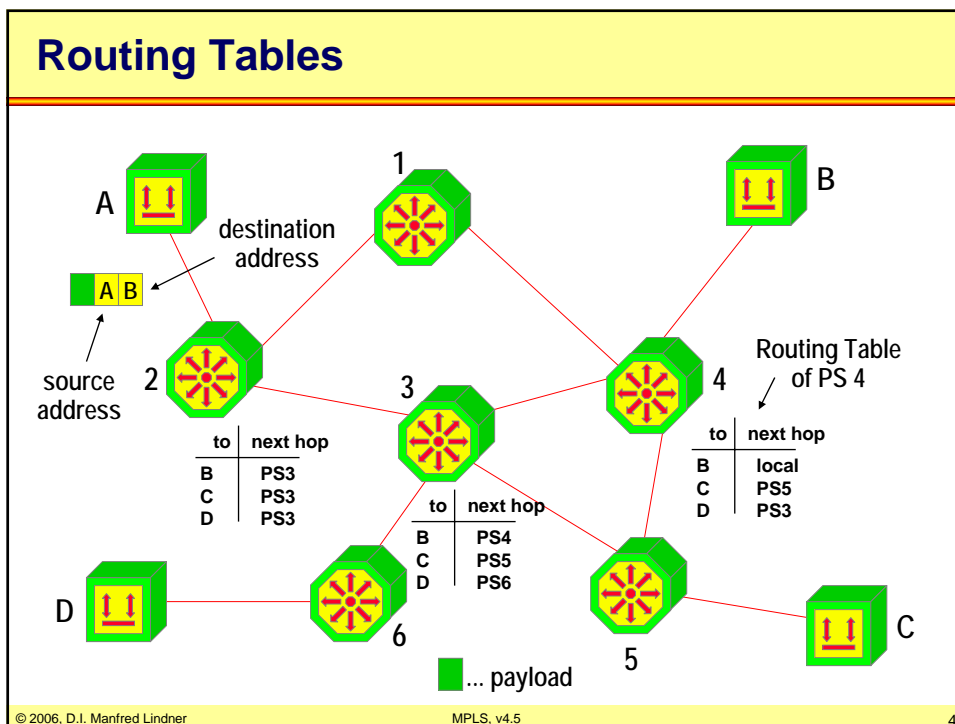
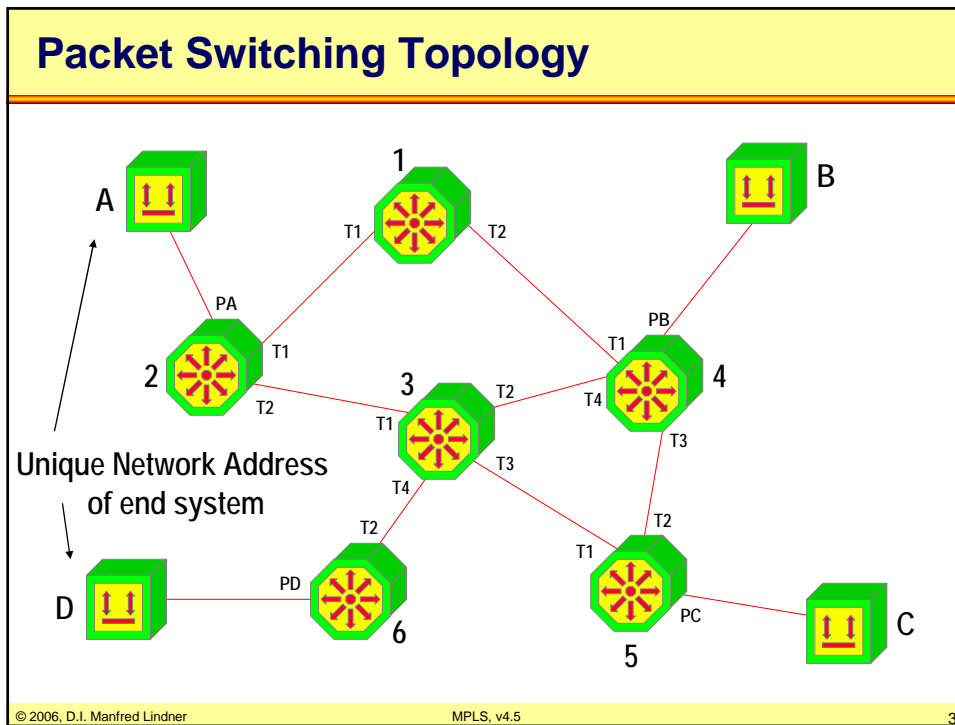
L85 - Multiprotocol Label Switching



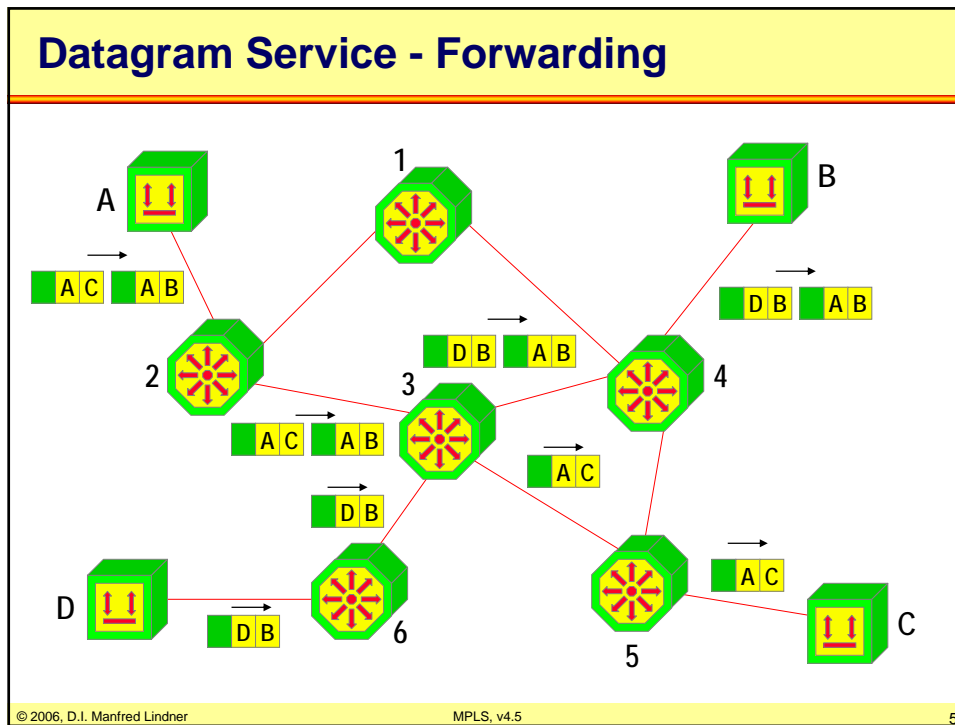
Agenda

- Review Datagram- versus Virtual Call Service
- IP over WAN Problems (Traditional Approach)
- MPLS Principles
- Label Distribution Methods
- MPLS Details (Cisco)
- RFC's

L85 - Multiprotocol Label Switching



L85 - Multiprotocol Label Switching

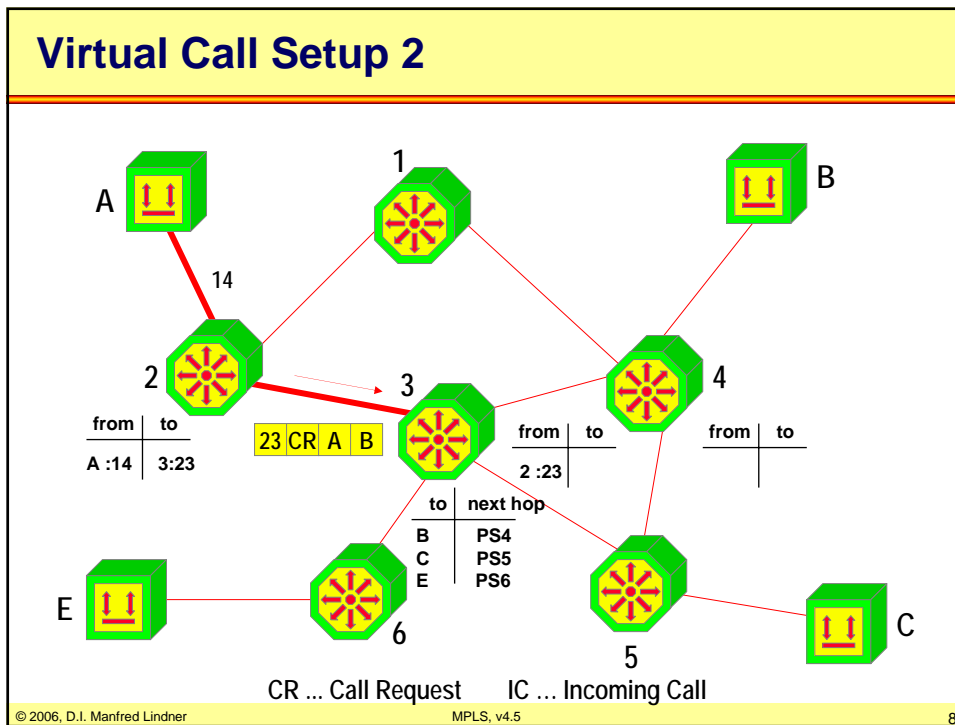
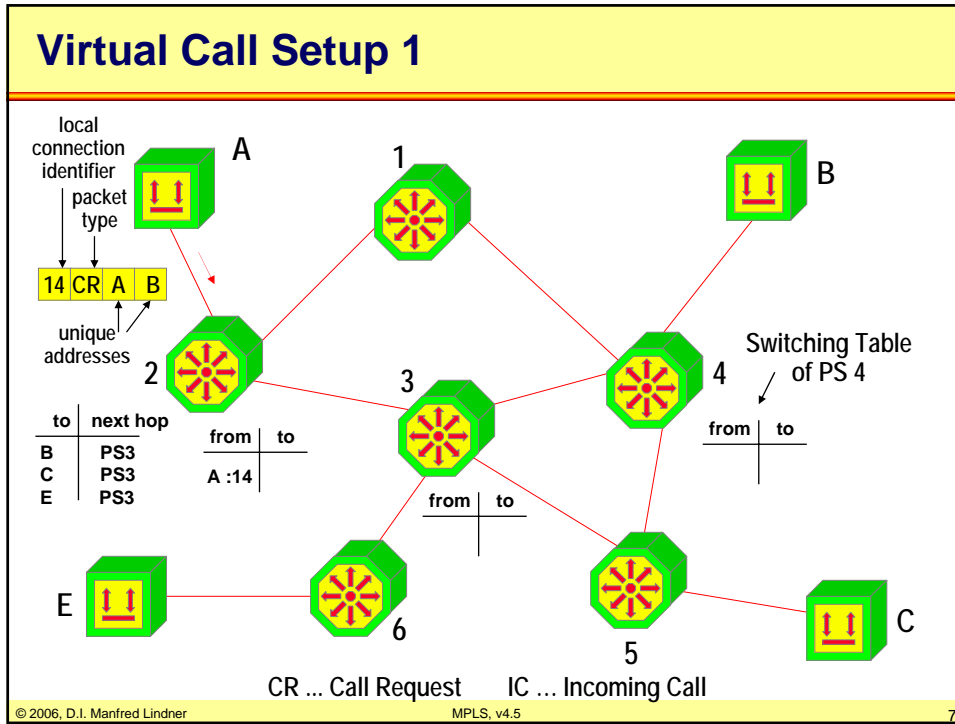


Some Datagram Service Facts

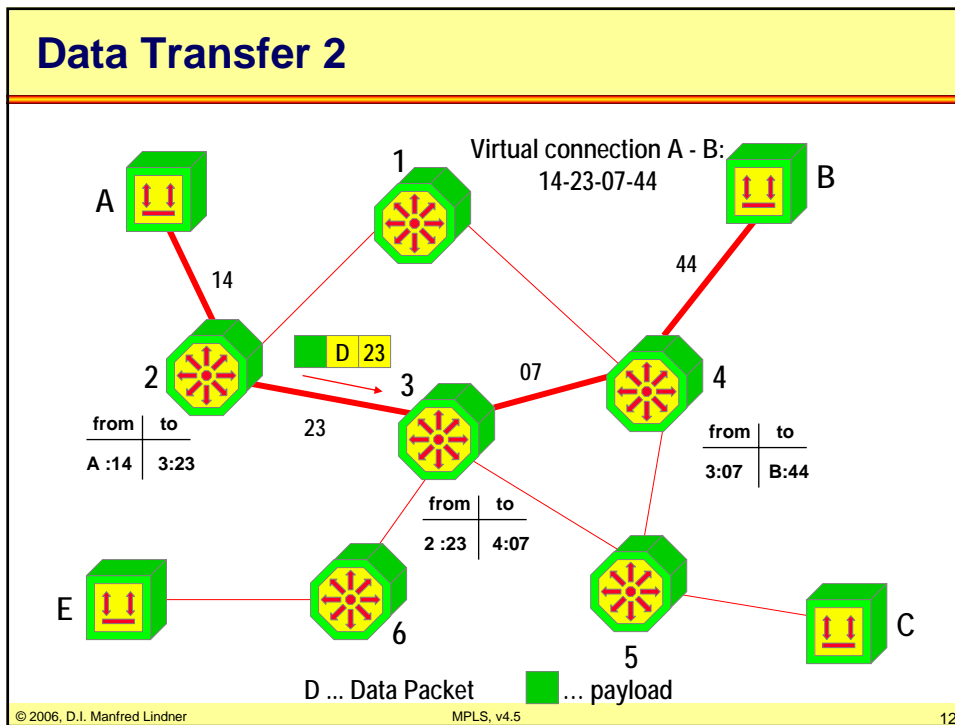
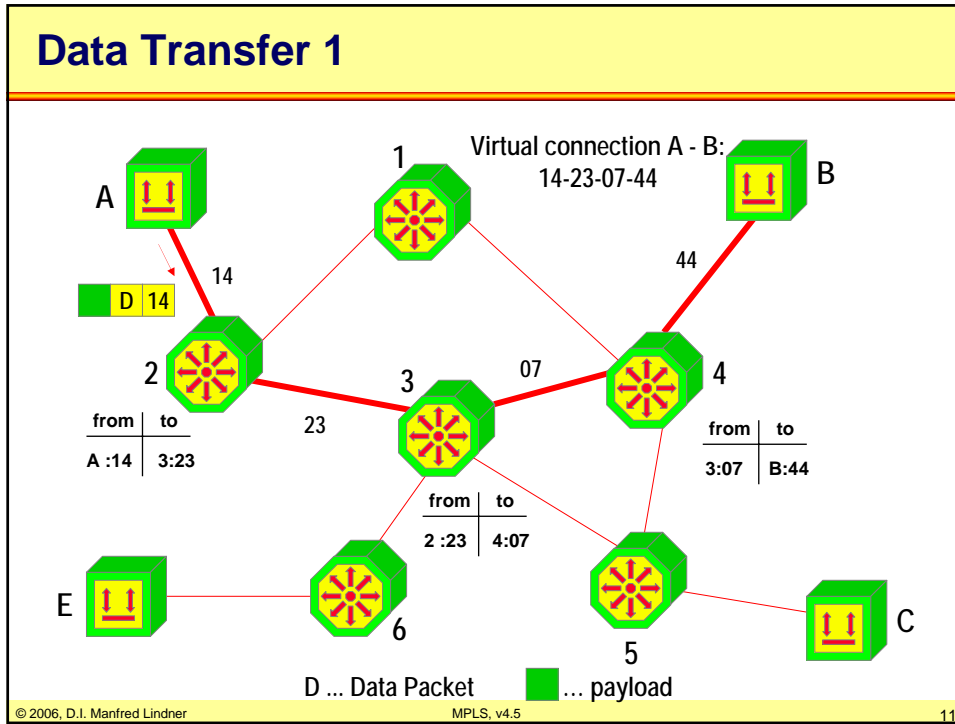
- **rerouting in case of topology changes means**
 - packets with the same address information can take different paths to destination
- **packets may be discarded by packet switches**
 - in case of network congestion or transmission errors
- **best effort service**
 - transport of packets depends on available resources
 - the end systems are responsible for error recovery
- **connectionless behavior**
 - reservation of resources is not possible in an easy way
 - bandwidth on trunk line
 - buffer memory (delay!) of packet switches

© 2006, D.I. Manfred Lindner MPLS, v4.5 6

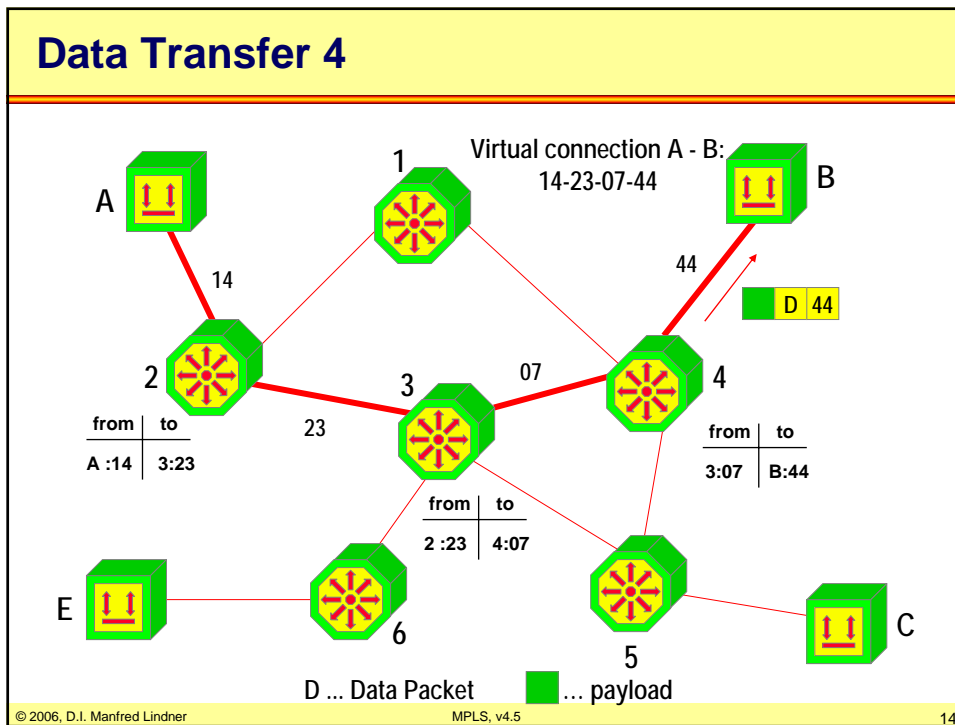
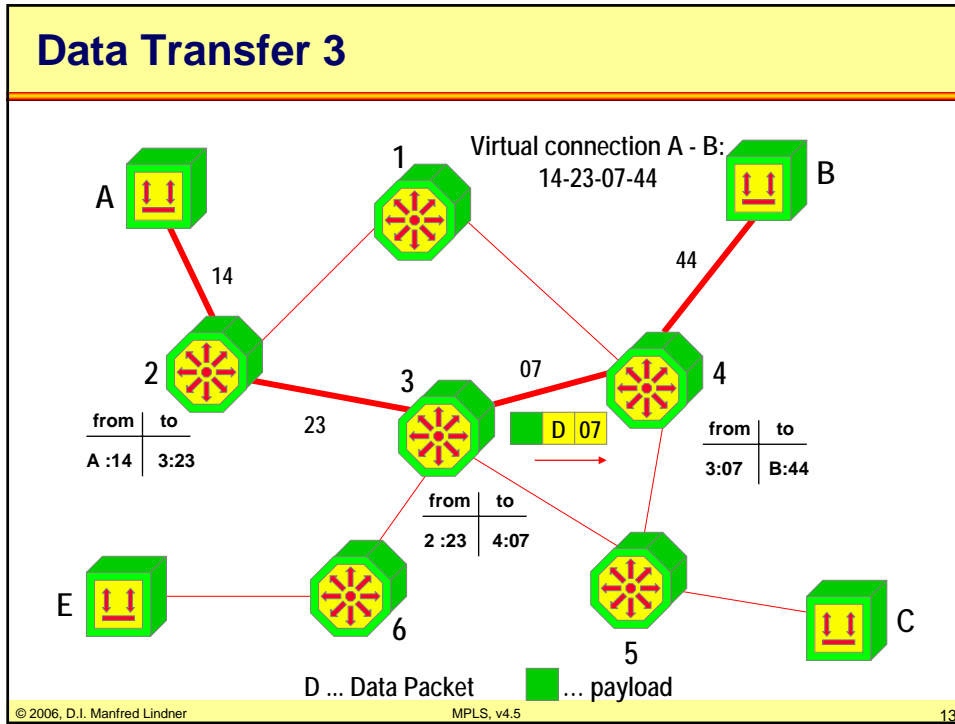
L85 - Multiprotocol Label Switching



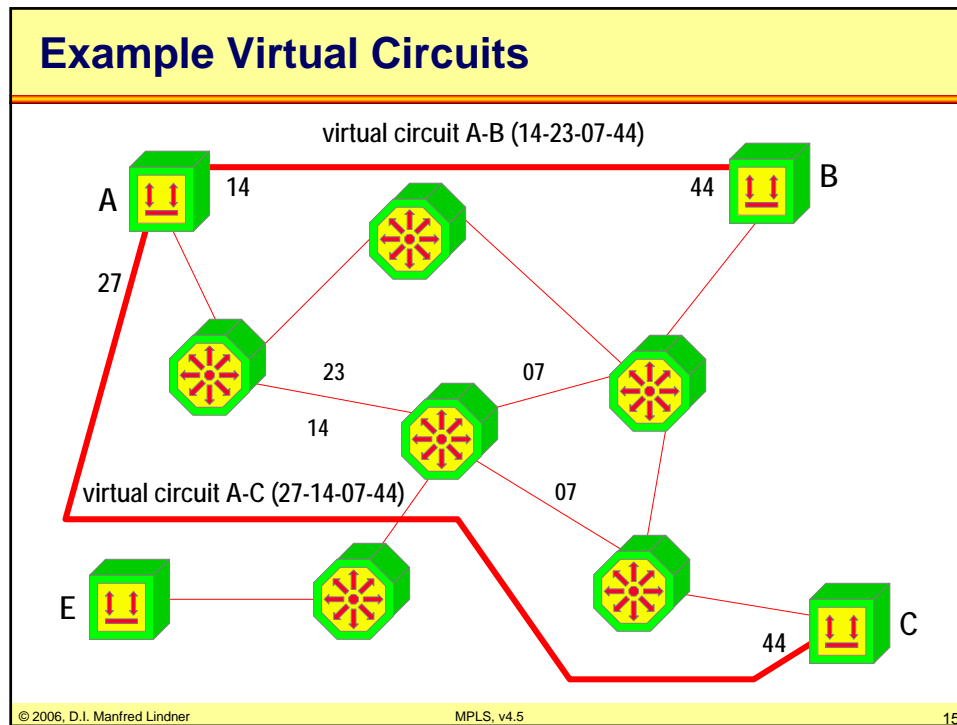
L85 - Multiprotocol Label Switching



L85 - Multiprotocol Label Switching



L85 - Multiprotocol Label Switching



Some Virtual Call Service Facts

- **connection-oriented packet switching**
 - allows reservation of resources
 - capacity, buffers, cpu time, etc.
 - can offer Quality of Service (QoS)
 - call setup can be denied by network if QoS can not be guaranteed
 - the sequence of data packets is guaranteed by the network
 - packets can use the established path only
 - path selection is done during connection setup
 - afterwards, entries of routing table are not used
 - in case of trunk line or packet switch failure
 - virtual circuits will be closed and must be reestablished again by end systems using call setup packets

L85 - Multiprotocol Label Switching

Network Technologies based on Virtual Call Method

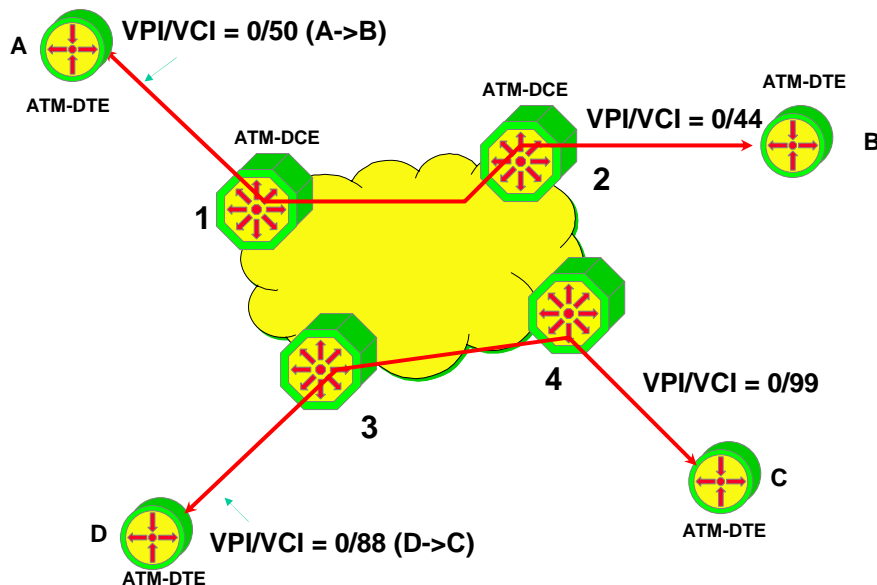
- **X.25**
 - reliable transport pipe because of protocol inherent error recovery and flow control
 - local identifier = LCN; in-band signaling
- **Frame Relay**
 - virtual circuit technique but no error recovery
 - congestion indication instead of flow control
 - local identifier = DLCI; out-band signaling
- **ATM**
 - same as Frame Relay but packets with fixed length
 - hence called cell switching
 - local identifier = VPI/VCI; out-band signaling

© 2006, D.I. Manfred Lindner

MPLS, v4.5

17

ATM Scenario -> VPI / VCI

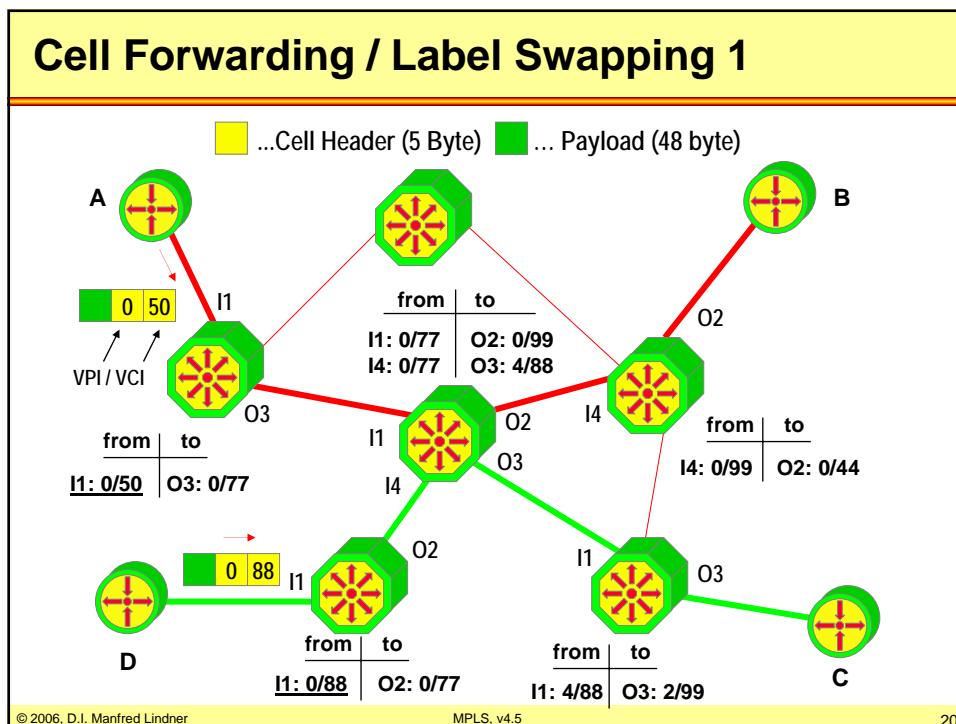
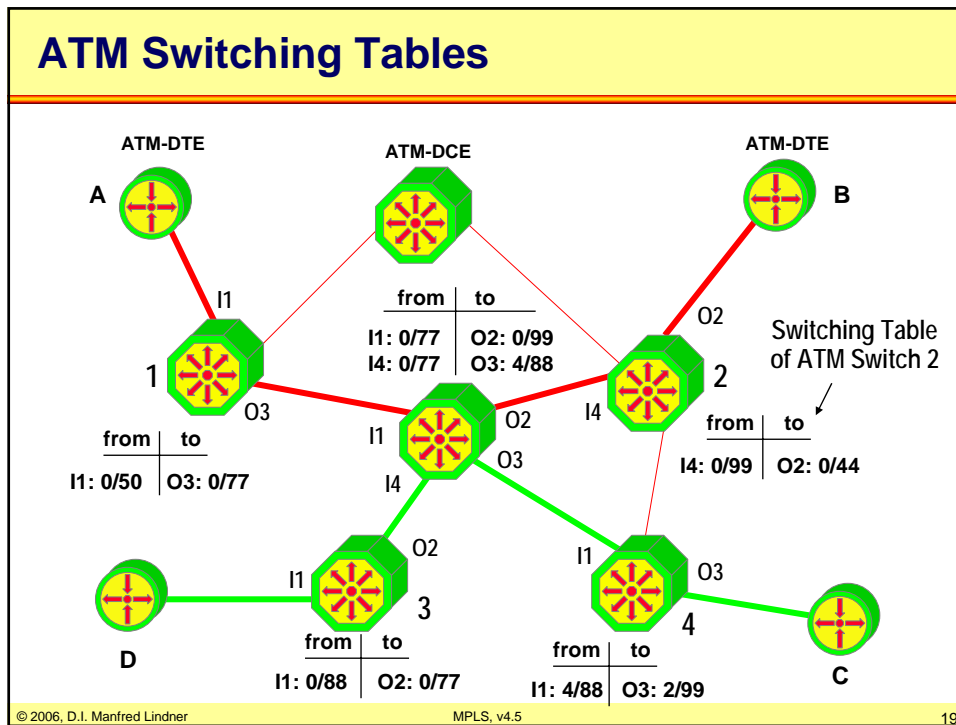


© 2006, D.I. Manfred Lindner

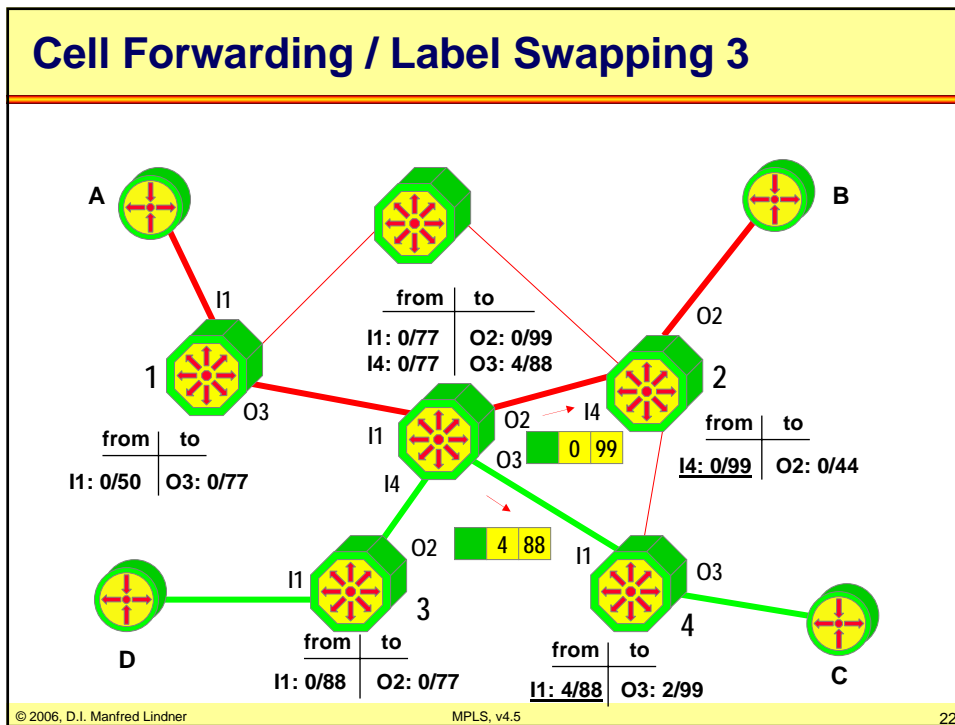
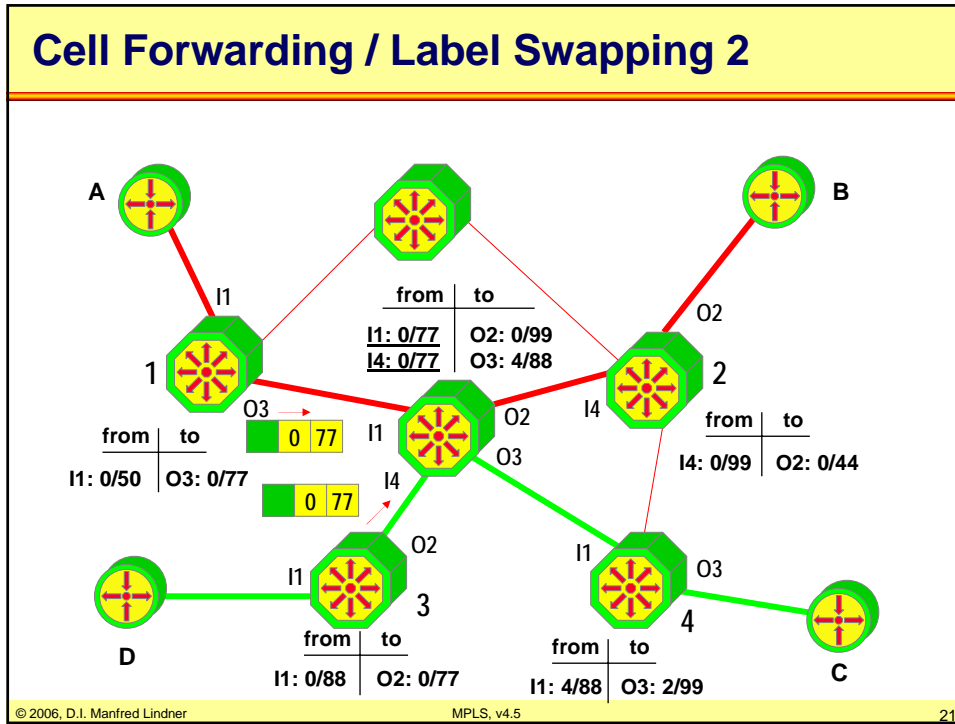
MPLS, v4.5

18

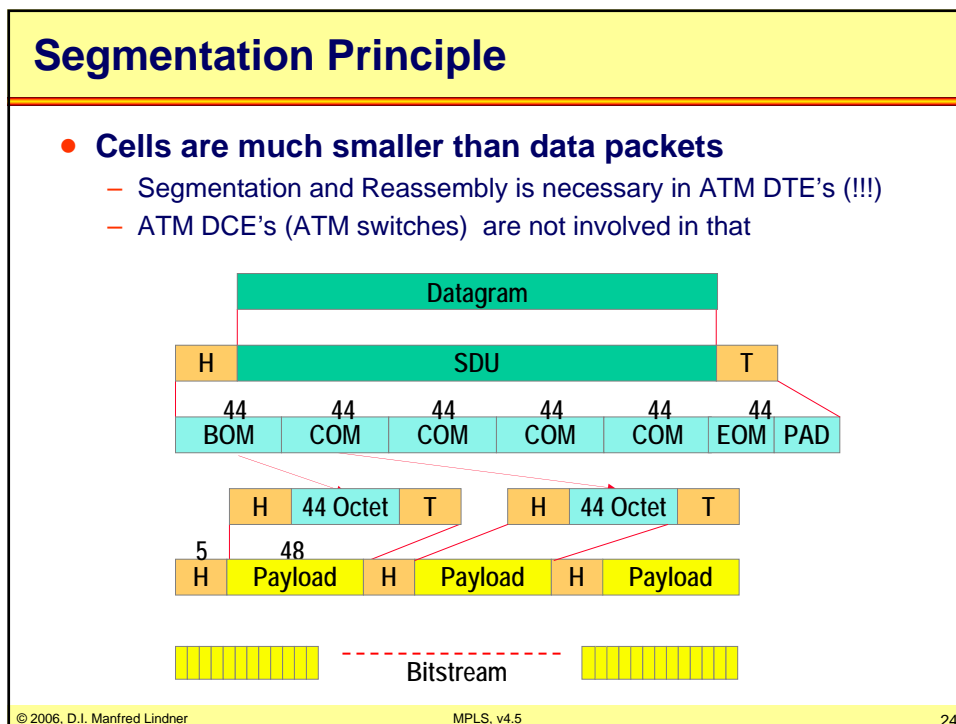
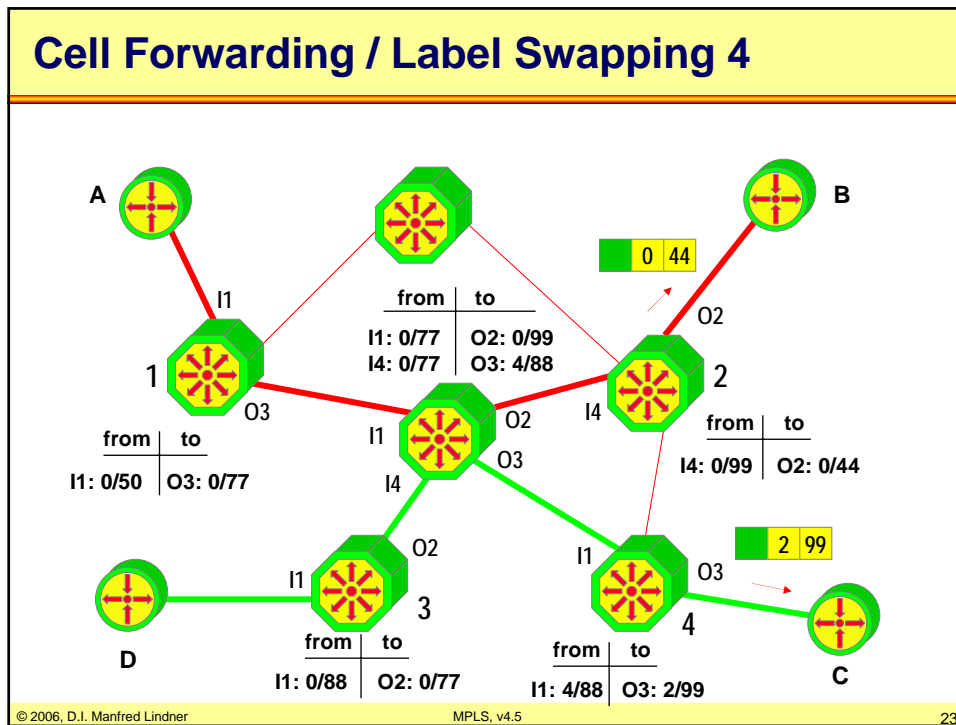
L85 - Multiprotocol Label Switching



L85 - Multiprotocol Label Switching



L85 - Multiprotocol Label Switching



L85 - Multiprotocol Label Switching

ATM Routing in Private ATM Networks

- **PNNI is based on Link-State technique**
 - like OSPF
- **Topology database**
 - Every switch maintains a database representing the states of the links and the switches
 - Extension to link state routing !!!
 - Announce status of node (!) as well as status of links
 - Contains dynamic parameters like delay, available cell rate, etc. versus static-only parameters of OSPF (link up/down, node up/down, nominal bandwidth of link)
- **Path determination based on metrics**
 - Much more complex than with standard routing protocols because of ATM-inherent QoS support

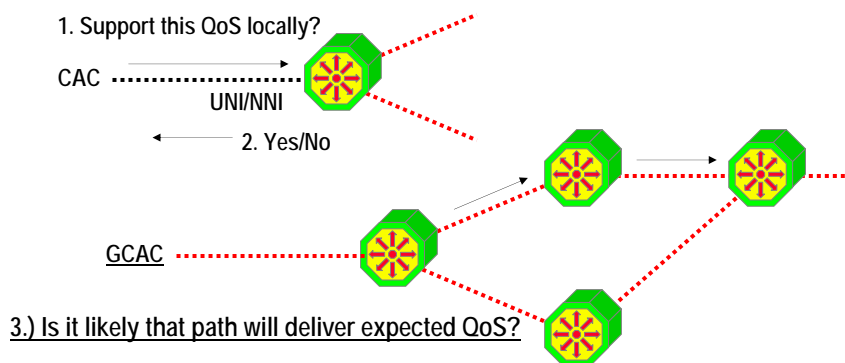
© 2006, D.I. Manfred Lindner

MPLS, v4.5

25

PNNI Routing

- **Generic Connection Admission Control (GCAC)**
 - Used by the source switch to select a path through the network
 - Calculates the expected CAC (Connection Admission Control) behavior of another node



© 2006, D.I. Manfred Lindner

MPLS, v4.5

26

L85 - Multiprotocol Label Switching

PNNI Routing (Simple QoS -> ACR only)

- **Operation of the GCAC**
 - CR ... Cell Rate
 - ACR ... Available Cell Rate
 - D ... Distance like OSPF costs

Requested CR = 30

Network diagram showing nodes S1, S2, S3, S4, S5, S6 and their ACR/D values:

- S1 (ATM-DTE) to S2 (ATM-DCE): ACR = 10
- S1 (ATM-DTE) to S3 (ATM-DCE): ACR = 50, D = 5
- S2 (ATM-DCE) to S3 (ATM-DCE): ACR = 50, D = 5
- S2 (ATM-DCE) to S4 (ATM-DCE): ACR = 50, D = 10
- S3 (ATM-DCE) to S4 (ATM-DCE): ACR = 50, D = 5
- S4 (ATM-DCE) to S5 (ATM-DCE): ACR = 50, D = 5
- S5 (ATM-DCE) to S6 (ATM-DCE): ACR = 40, D = 5
- S6 (ATM-DCE) to S6 (ATM-DTE): ACR = 20
- S6 (ATM-DCE) to S6 (ATM-DTE): ACR = 40, D = 5

© 2006, D.I. Manfred Lindner MPLS, v4.5 27

PNNI Routing

- **Operation of the GCAC**
 - 1) Links not supporting requested CR are eliminated ->
 - Metric component -> ACR value used

Requested CR = 30

Network diagram showing nodes S1, S2, S3, S4, S5, S6 and their ACR/D values:

- S1 (ATM-DTE) to S2 (ATM-DCE): ACR = 10 (dotted line)
- S1 (ATM-DTE) to S3 (ATM-DCE): ACR = 50, D = 5
- S2 (ATM-DCE) to S3 (ATM-DCE): ACR = 50, D = 5
- S2 (ATM-DCE) to S4 (ATM-DCE): ACR = 50, D = 10
- S3 (ATM-DCE) to S4 (ATM-DCE): ACR = 50, D = 5
- S4 (ATM-DCE) to S5 (ATM-DCE): ACR = 50, D = 5
- S5 (ATM-DCE) to S6 (ATM-DCE): ACR = 40, D = 5
- S6 (ATM-DCE) to S6 (ATM-DTE): ACR = 20 (dotted line)
- S6 (ATM-DCE) to S6 (ATM-DTE): ACR = 40, D = 5

© 2006, D.I. Manfred Lindner MPLS, v4.5 28

L85 - Multiprotocol Label Switching

PNNI Routing

- **Operation of the GCAC**
 - 2) Next, shortest path(s) to the destination is (are) calculated
 - Metric component -> Distance value used

© 2006, D.I. Manfred Lindner MPLS, v4.5 29

PNNI Routing

- **Operation of the GCAC**
 - 3) One path is chosen and source node S1 constructs a Designated Transit List (DTL) -> source routing --> -----
 - Describes the complete route to the destination

© 2006, D.I. Manfred Lindner MPLS, v4.5 30

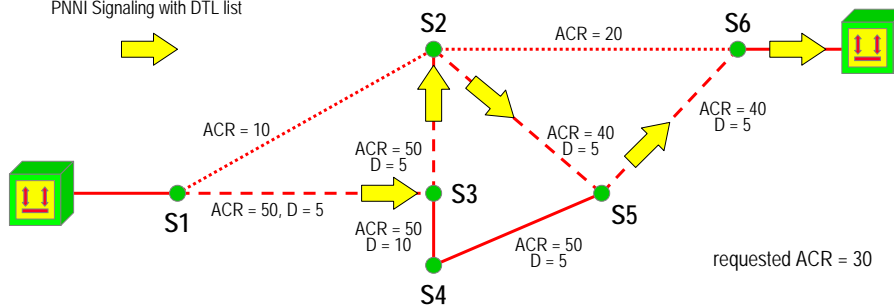
L85 - Multiprotocol Label Switching

PNNI Routing - Source Routing

- **Operation of the GCAC**

- 4) DTL is inserted into signaling request and moved on to next switch
- 5) After receipt next switch perform local CAC
 - 5a) if ok -> pass PNNI signaling message on to next switch of DTL
- 6a) finally signaling request will reach destination ATM-DTE -> VC ok

PNNI Signaling with DTL list



© 2006, D.I. Manfred Lindner

MPLS, v4.5

31

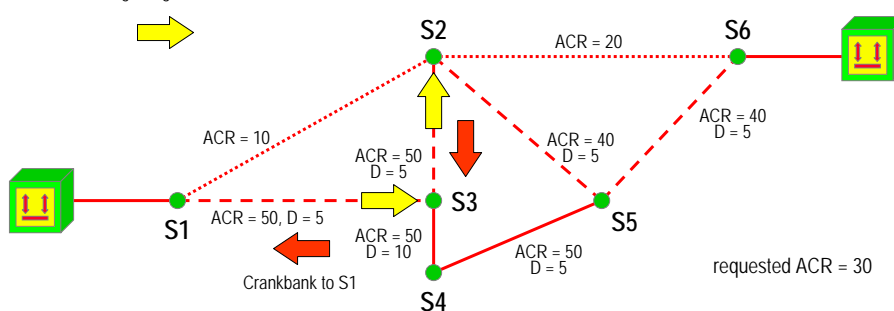
PNNI Routing - Crankbank

- **Operation of the GCAC**

- 5) After receipt next switch (S2) perform local CAC
 - 5b) if nok -> return PNNI signaling message to originator of DTL
- 6b) S1 will construct alternate source route

PNNI Signaling with DTL list

S2 cannot fulfill requirements on trunk to S5



© 2006, D.I. Manfred Lindner

MPLS, v4.5

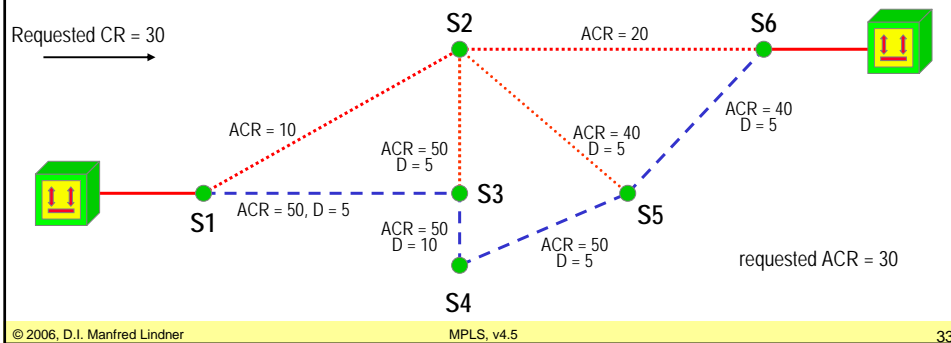
32

L85 - Multiprotocol Label Switching

PNNI Routing - New Trial

- **Operation after Crankback**

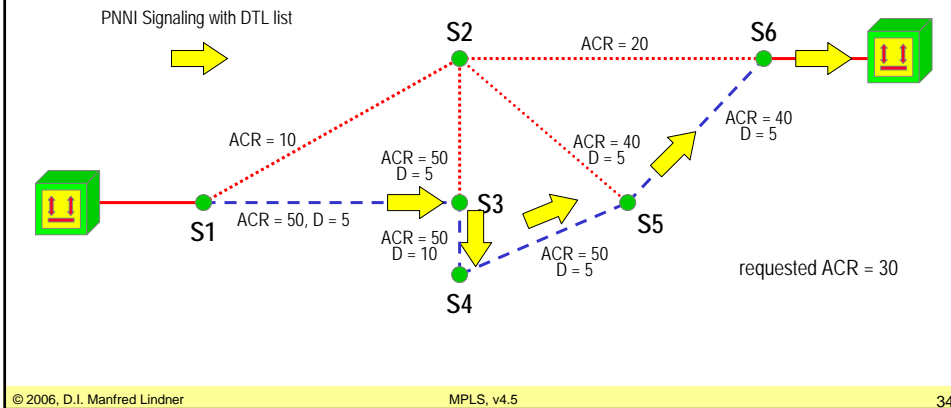
- 7b) The other possible path is chosen - source node constructs again a new Designated Transit List (DTL)



PNNI Routing - Source Routing

- **Operation of the GCAC**

- 8b) DTL is inserted into signaling request
- 9b) After receipt next switch perform local CAC
 - if ok -> pass PNNI signaling message on to next switch of DTL
- 10b) finally signaling request will reach destination ATM-DTE -> VC ok



L85 - Multiprotocol Label Switching

Agenda

- Review Datagram- versus Virtual Call Service
- IP over WAN Problems (Traditional Approach)
- MPLS Principles
- Label Distribution Methods
- MPLS Details (Cisco)
- RFC's

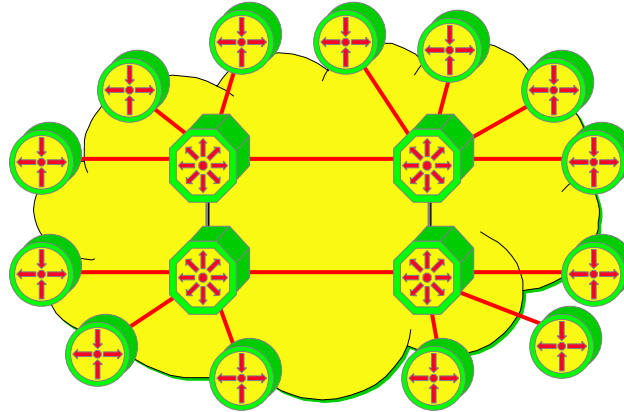
IP Overlay Model - Scalability

- **Base problem Nr.1**
 - IP routing separated from ATM routing because of the normal IP overlay model
 - no exchange of routing information between IP and ATM world
 - leads to scalability and performance problems
 - many peers, configuration overhead, duplicate broadcasts
 - note:
 - IP system requests virtual circuits from the ATM network
 - ATM virtual circuits are established according to PNNI routing
 - virtual circuits are treated by IP as normal point-to-point links
 - IP routing messages are transported via this point-to-point links to discover IP neighbors and IP network topology

L85 - Multiprotocol Label Switching

A Simple Physical Network ...

Physical wiring



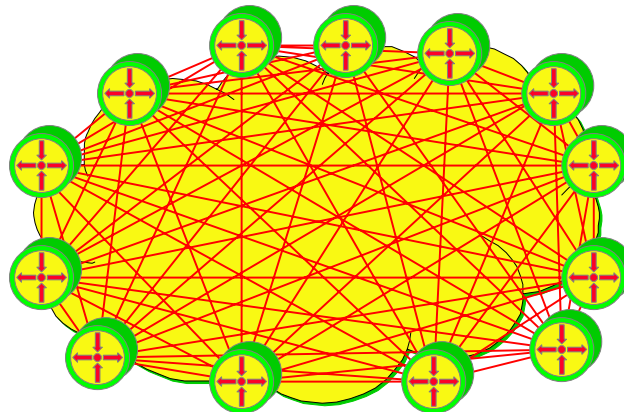
© 2006, D.I. Manfred Lindner

MPLS, v4.5

37

IP Data Link View (Non-NBMA)

Every virtual circuit has its own IP Net-ID (subinterface technique)



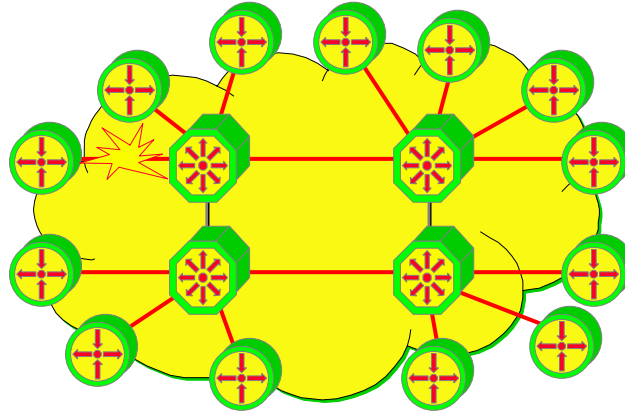
© 2006, D.I. Manfred Lindner

MPLS, v4.5

38

L85 - Multiprotocol Label Switching

A Single Network Failure ...

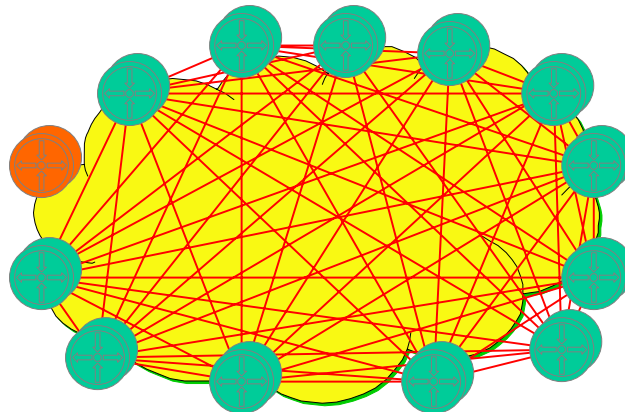


© 2006, D.I. Manfred Lindner

MPLS, v4.5

39

Causes Loss of Multiple IP Router Peers !!!

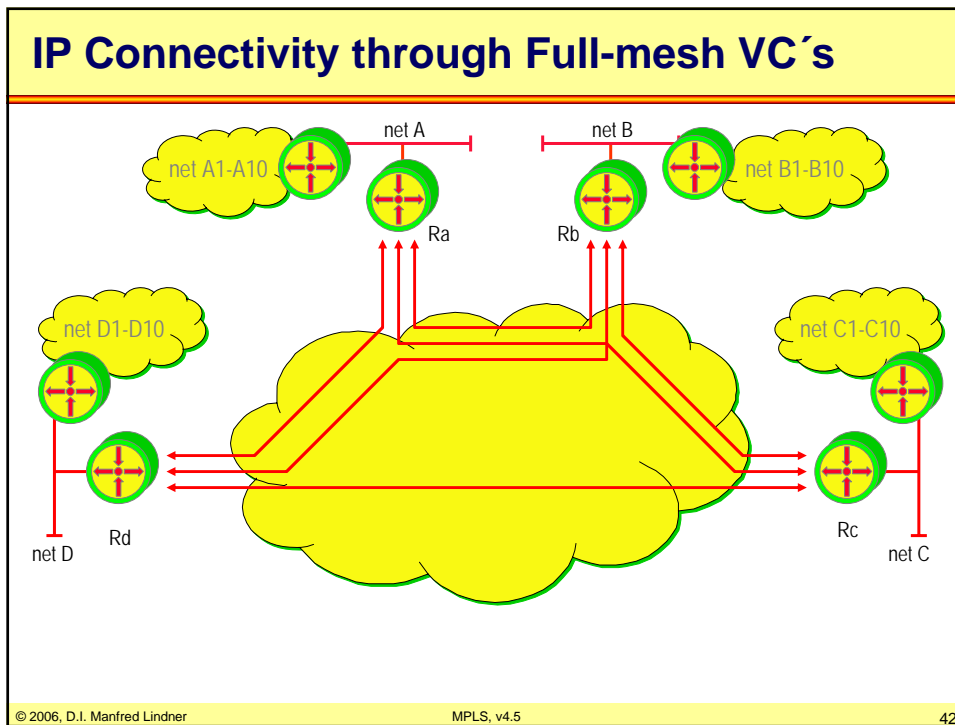
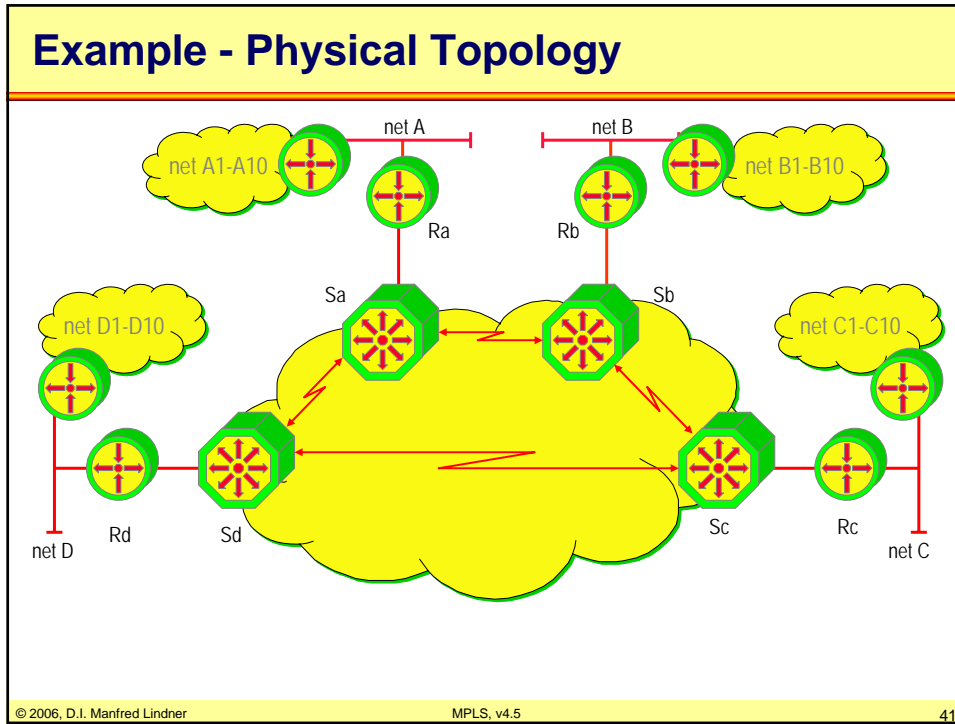


© 2006, D.I. Manfred Lindner

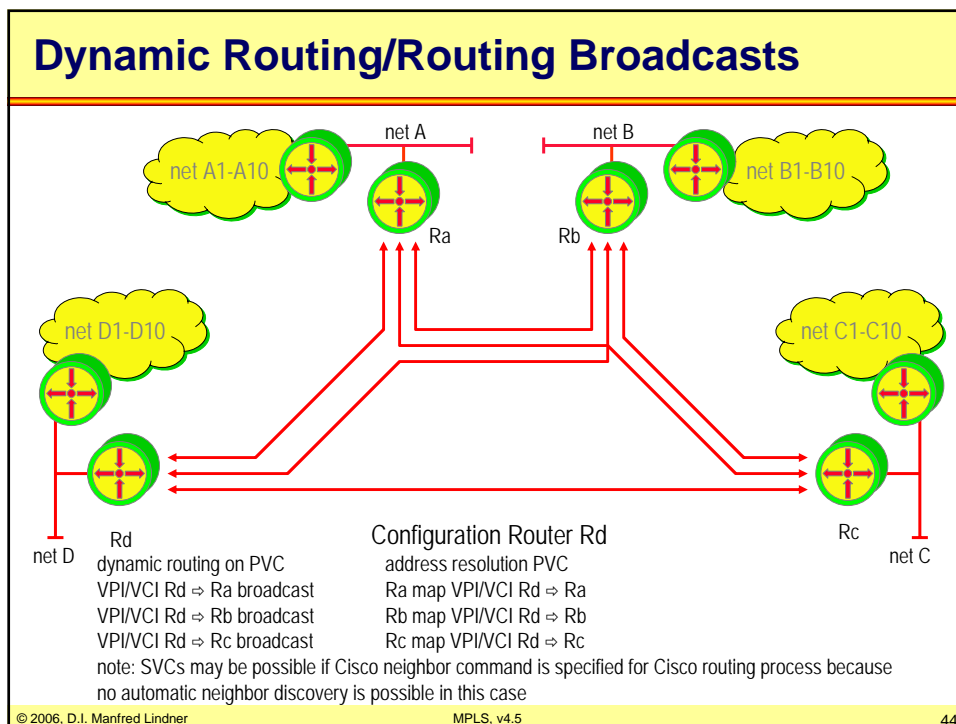
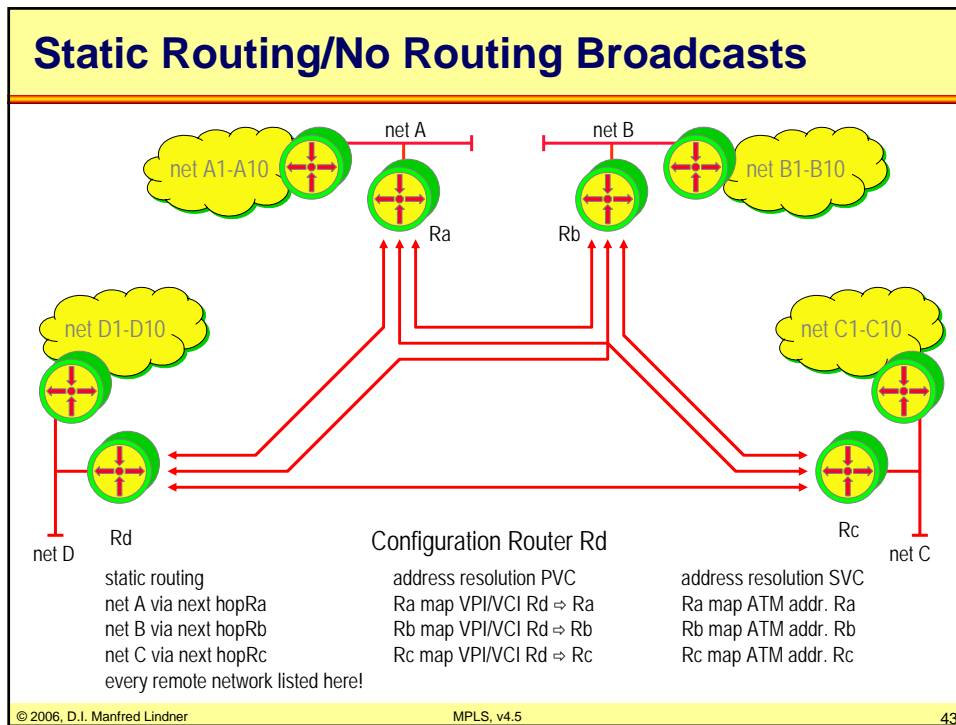
MPLS, v4.5

40

L85 - Multiprotocol Label Switching



L85 - Multiprotocol Label Switching



L85 - Multiprotocol Label Switching

Observations

- **This clearly does not scale**
- **Switch/router interaction needed**
 - peering model
- **Without MPLS**
 - Only outside routers are layer 3 neighbors
 - one ATM link failure causes multiple peer failures
 - routing traffic does not scale (number of peers)
- **With MPLS**
 - Inside MPLS switch is the layer 3 routing peer of an outside router
 - one ATM link failure causes one peer failure
 - highly improved routing traffic scalability

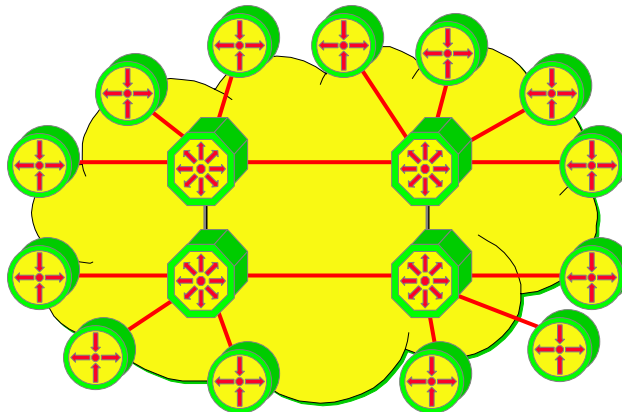
© 2006, D.I. Manfred Lindner

MPLS, v4.5

45

A Simple Physical Network ...

Physical wiring and NBMA behavior



© 2006, D.I. Manfred Lindner

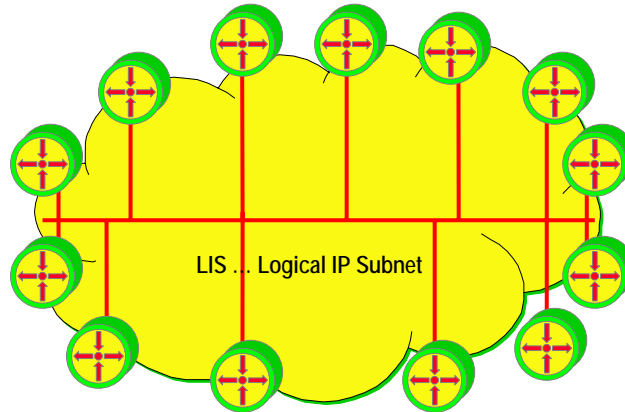
MPLS, v4.5

46

L85 - Multiprotocol Label Switching

IP Data Link View (NBMA)

Routers assume a LAN behavior because all interfaces have the same IP Net-ID but LAN broadcasting to reach all others is not possible



© 2006, D.I. Manfred Lindner

MPLS, v4.5

47

Some Solutions for the NBMA Problem

- ARP (Address Resolution Protocol) Server
 - keeps configuration overhead for address resolution small
 - but does not solve the routing issue (neighbor discovery and duplicate routing broadcasts on a single wire)
- MARS/MCS (Multicast Address Resolution Server / Multicast Server)
 - additionally keeps configuration overhead for routing small
 - and does solve broadcast/multicast problem with either full mesh of point-to-multipoint circuits or by usage of MCS server
- LANE (LAN Emulation = ATM VLAN's)
 - simulates LAN behavior where address resolution and routing broadcasts are not a problem
- All of them
 - require a lot of control virtual circuits (p-t-p and p-t-m) and SVC support of the underlying ATM network

© 2006, D.I. Manfred Lindner

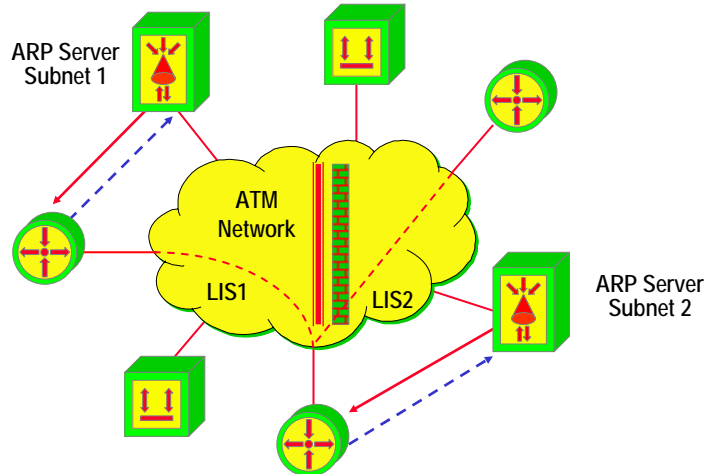
MPLS, v4.5

48

L85 - Multiprotocol Label Switching

RFC 2225 Operation (Classical IP over ATM)

- **ARP server for every LIS**
 - multiple hops for communication between Logical IP Subnets

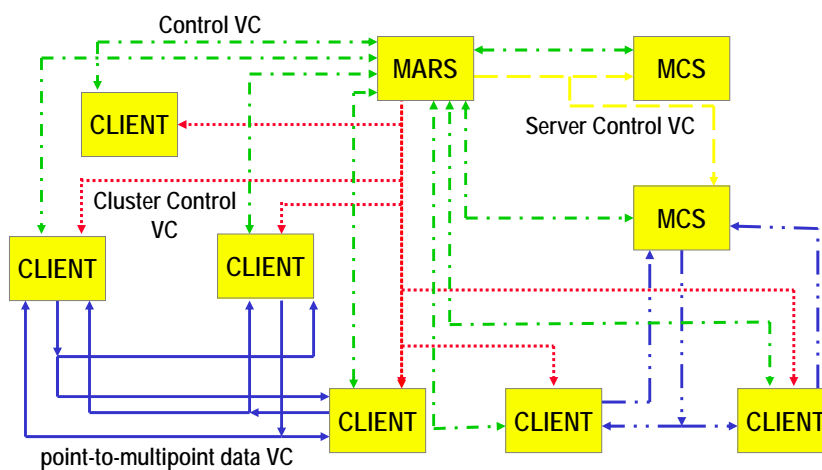


© 2006, D.I. Manfred Lindner

MPLS, v4.5

49

MARS/MCS Architecture

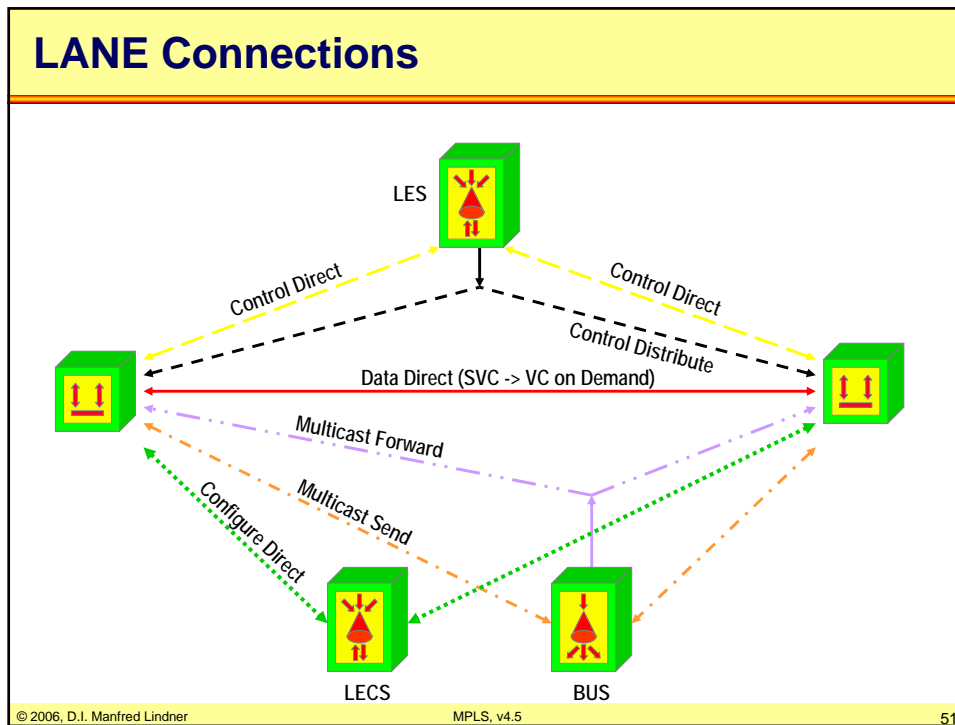


© 2006, D.I. Manfred Lindner

MPLS, v4.5

50

L85 - Multiprotocol Label Switching



Scalability Aspects

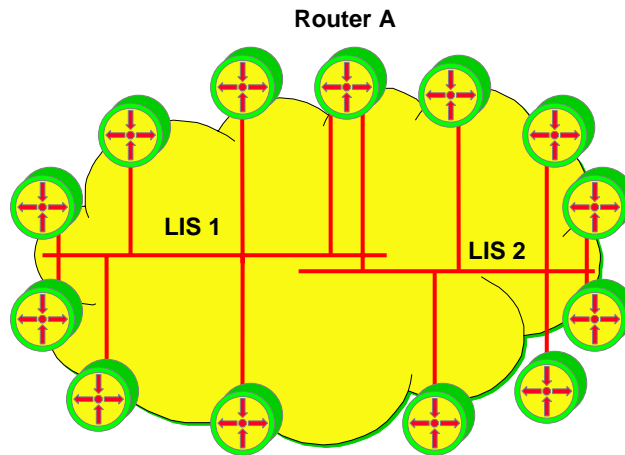
- **Number of IP peers determines**
 - number of data virtual circuits
 - number of control virtual circuits
 - number of duplicate broadcasts on a single wire
- **Method to solve the broadcast domain problem**
 - split the network in several LIS (logical IP subnets)
 - connect LIS's by normal IP router (ATM-DCE) which is of course outside the ATM network
- **But then another problem arise**
 - traffic between two systems which both are attached to the ATM network but belong to different LIS's must leave the ATM network and enter it again at the connecting IP router (-> SAR delay)

© 2006, D.I. Manfred Lindner MPLS, v4.5 52

L85 - Multiprotocol Label Switching

IP Multiple LIS's in case of ROLC (Routing Over Large Clouds)

IP router A connects LIS1 and LIS2



© 2006, D.I. Manfred Lindner

MPLS, v4.5

53

Some Solutions for the ROLC Problem

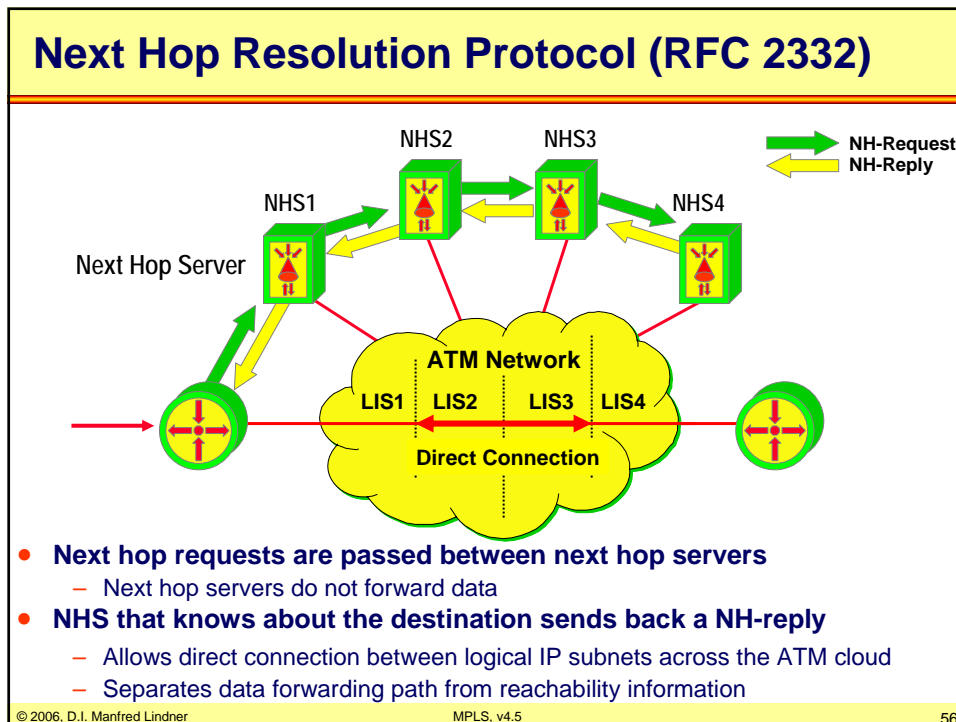
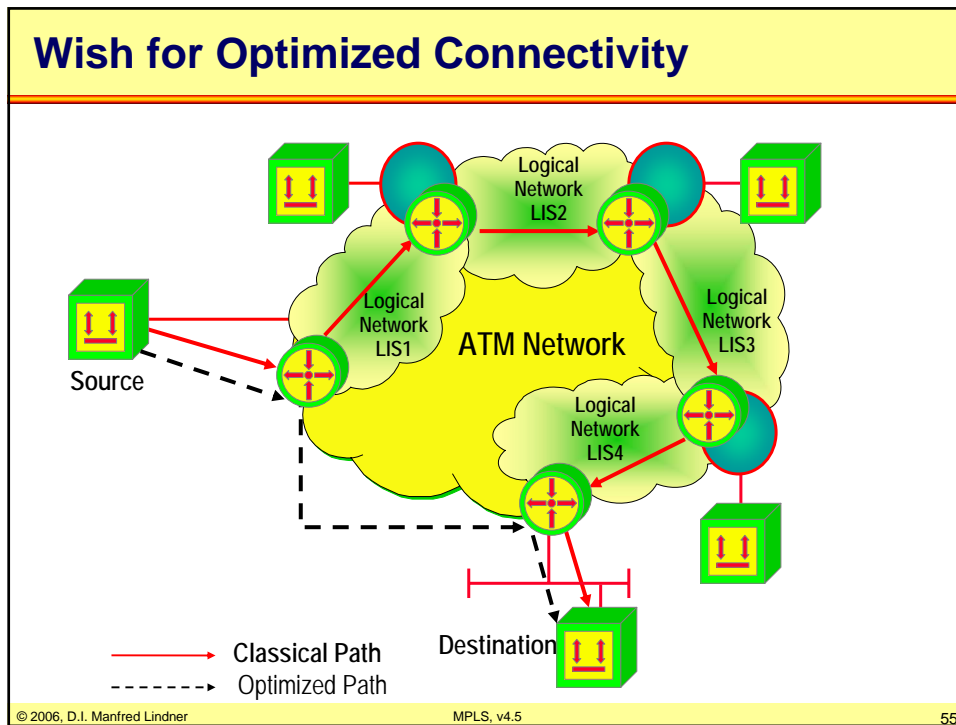
- **NHRP (Next Hop Resolution Protocol)**
 - creates an ATM shortcut between two systems of different LIS's
- **MPOA (Multi Protocol Over ATM)**
 - LANE + NHRP combined
 - creates an ATM shortcut between two systems of different LIS's
- **In both methods**
 - the ATM shortcut is created if traffic between the two systems exceeds a certain threshold -> data-flow driven
 - a lot of control virtual circuits (p-t-p and p-t-m) is required

© 2006, D.I. Manfred Lindner

MPLS, v4.5

54

L85 - Multiprotocol Label Switching



L85 - Multiprotocol Label Switching

IP Performance

- **Base problem Nr.2**

- IP forwarding is slow compared to ATM cell forwarding
 - IP routing paradigm
 - hop-by-hop routing with (recursive) IP routing table lookup, IP TTL decrement and IP checksum computing
 - destination based routing (large tables in the core of the Internet)
- Load balancing
 - in a stable network all IP datagram's will follow the same path (least cost routing versus ATM's QoS routing)
- QoS (Quality of Service)
 - IP is connectionless packet switching (best-effort delivery versus ATM's guarantees)
- VPN (Virtual Private Networks)
 - ATM VC's have a natural closed user group (=VPN) behavior

© 2006, D.I. Manfred Lindner

MPLS, v4.5

57

Basic Ideas to Solve the Problems

- **Make ATM topology visible to IP routing**
 - to solve the scalability problems
 - a classical ATM switch gets IP router functionality
- **Divide IP routing from IP forwarding**
 - to solve the performance problems
 - IP forwarding based on ATM's label swapping paradigm (connection-oriented packet switching)
 - IP routing based on classical IP routing protocols
- **Combine best of both**
 - forwarding based on ATM label swapping paradigm
 - routing done by traditional IP routing protocols

© 2006, D.I. Manfred Lindner

MPLS, v4.5

58

L85 - Multiprotocol Label Switching

MPLS

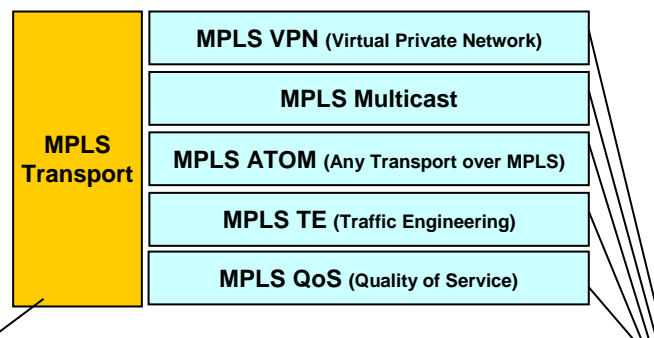
- **Several similar technologies were invented in the mid-1990s**
 - IP Switching (Ipsilon)
 - Cell Switching Router (CSR, Toshiba)
 - Tag Switching (Cisco)
 - Aggregated Route-Based IP Switching (ARIS, IBM)
- **IETF merges these technologies**
 - MPLS (Multi Protocol Label Switching)
 - note: multiprotocol means that IP is just one possible protocol to be transported by a MPLS switched network
 - RFC 3031

© 2006, D.I. Manfred Lindner

MPLS, v4.5

59

MPLS Building Blocks



You always need this!
MPLS Transport solves most of the mentioned problems (scalability / performance)

If you need **"Advanced Features"** like VPN or Multicast support you optionally may choose from these building blocks riding on top of a MPLS Transport network

© 2006, D.I. Manfred Lindner

MPLS, v4.5

60

L85 - Multiprotocol Label Switching

Agenda

- Review Datagram- versus Virtual Call Service
- IP over WAN Problems (Traditional Approach)
- MPLS Principles
- Label Distribution Methods
- MPLS Details (Cisco)
- RFC's

© 2006, D.I. Manfred Lindner

MPLS, v4.5

61

MPLS Approach

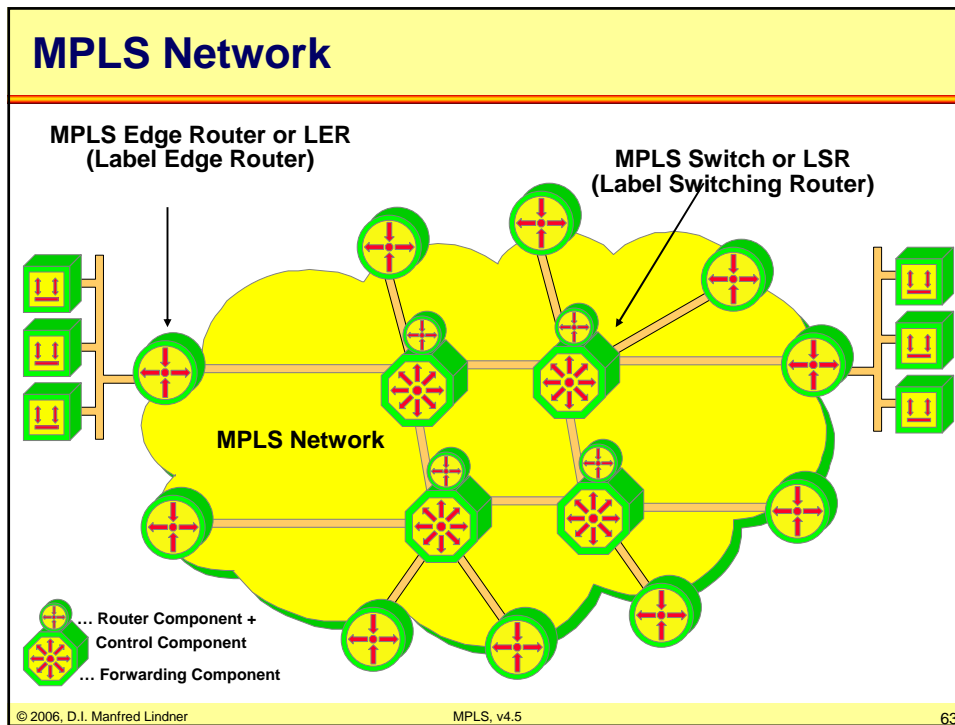
- **Traditional IP uses the same information for**
 - path determination (routing)
 - packet forwarding (switching)
- **MPLS separates the tasks**
 - L3 addresses used for path determination
 - labels used for switching
- **MPLS Network consists of**
 - MPLS Edge Routers and MPLS Switches
- **Edge Routers and Switches**
 - exchange routing information about L3 IP networks
 - exchange forwarding information about the actual usage of labels

© 2006, D.I. Manfred Lindner

MPLS, v4.5

62

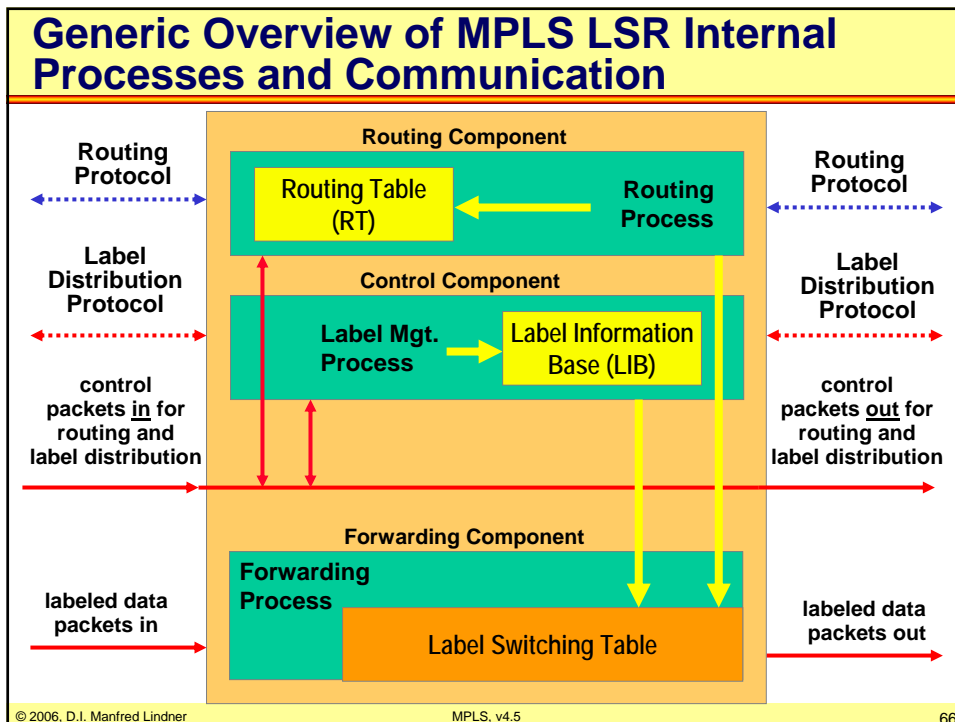
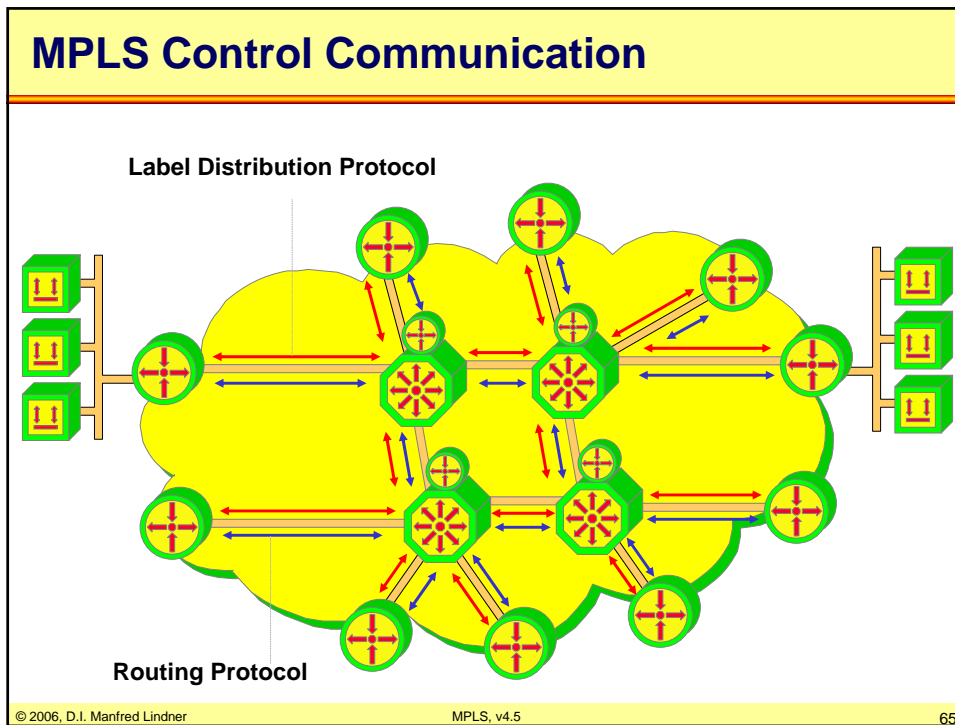
L85 - Multiprotocol Label Switching



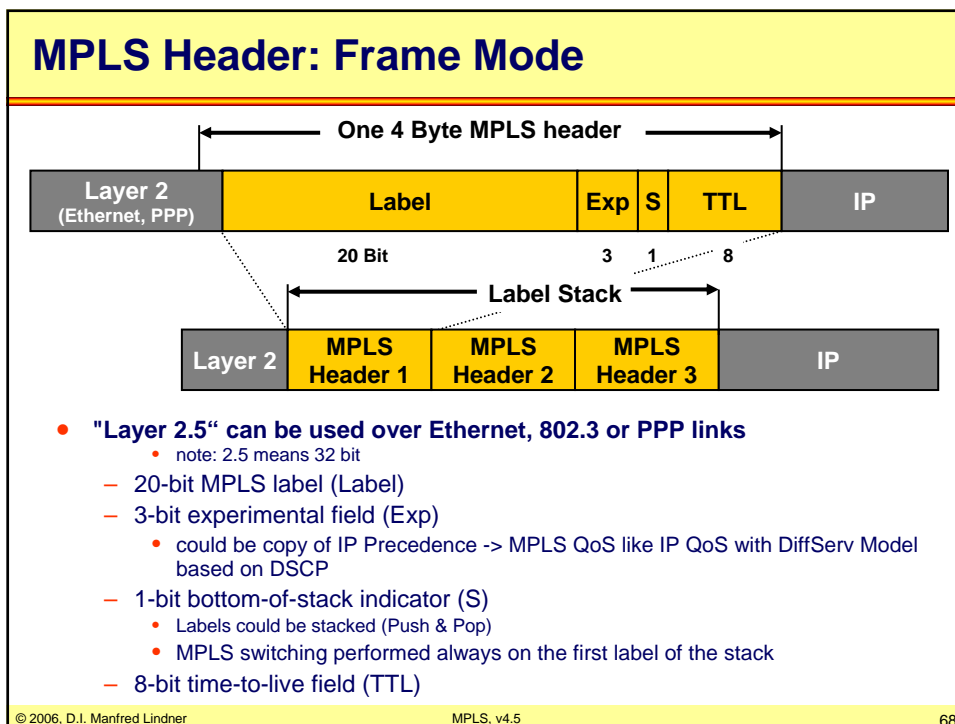
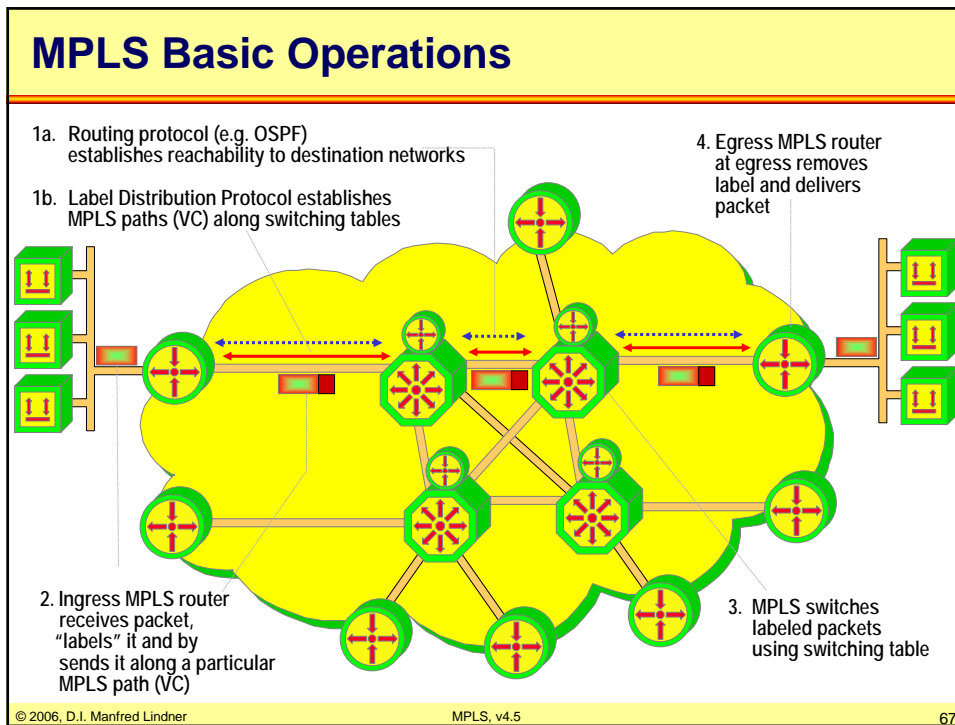
MPLS LSR Internal Components

- **Routing Component**
 - still accomplished by using standard IP routing protocols creating routing table
- **Control Component**
 - maintains correct label distribution among a group of label switches
 - Label Distribution Protocol for communication
 - between MPLS Switches
 - between MPLS Switch and MPLS Edge Router
- **Forwarding Component**
 - uses labels carried by packets plus label information maintained by a label switch (classical VC switching table) to perform packet forwarding -> "label swapping"

L85 - Multiprotocol Label Switching



L85 - Multiprotocol Label Switching



L85 - Multiprotocol Label Switching

MPLS Header: Cell Mode

MPLS Header 1	MPLS Header 2	IP Packet
------------------	------------------	-----------

ATM Convergence Sublayer (CS):

MPLS Header 1	MPLS Header 2	IP Packet	AAL5 Trailer
------------------	------------------	-----------	--------------

- **ATM Switches can only switch VPI/VCI—no MPLS labels!**
 - Only the topmost label is inserted in the VPI/VCI field

ATM Segmentation and Reassembling Sublayer (SAR):

(first cell)

GFC	VPI	VCI	PTI	CLP	HEC	MPLS Header(s)	IP Header	DATA
	Topmost Label							

(subsequent cells)

GFC	VPI	VCI	PTI	CLP	HEC	DATA
	Topmost Label					

© 2006, D.I. Manfred Lindner MPLS, v4.5 69

Labels and FEC

- **A label is used to identify a certain subset of packets**
 - which take the same MPLS path or which get the same forwarding treatment in the MPLS label switched network
 - The path is so called Label Switched Path (LSP)
 - “The MPLS Virtual Circuit”
- **Thus a label represents**
 - a so called Forwarding Equivalence Class (FEC)
- **The assignment of a packet to FEC**
 - is done just once by the MPLS Edge Router, as the packet enters the network
 - most commonly this is based on the IP network layer destination address

© 2006, D.I. Manfred Lindner MPLS, v4.5 70

L85 - Multiprotocol Label Switching

Label Binding

- **Two neighboring LSR's R1 and R2**
 - may agree that when R1 transmits a packet to R2, R1 will label with packet with label value L if and only if the packet is a member of a particular FEC F
- **They agree**
 - on a so called "binding" between label L and FEC F for packets moving from R1 to R2
- **As a result**
 - L becomes R1's "outgoing label" or "remote label" representing FEC F
 - L becomes R2's "incoming label" or "local label" representing FEC F

© 2006, D.I. Manfred Lindner

MPLS, v4.5

71

Creating and Destroying Label Binding 1

- **Control Driven (favored by IETF-WG)**
 - creation or deconstruction of labels is triggered by control information such as
 - OSPF routing, IS-IS routing
 - PIM Join/Prune messages in case of IP multicast routing
 - IntSrv RSVP messages in case of IP QoS IntSrv Model
 - DiffSrv Traffic Engineering in Case of IP QoS DiffSrv Model
 - hence we have a pre-assignment of labels based on reachability information
 - and optionally based on QoS needs
 - also called Topology Driven

© 2006, D.I. Manfred Lindner

MPLS, v4.5

72

L85 - Multiprotocol Label Switching

Creating and Destroying Label Binding 2

- **Data Driven**

- creation or deconstruction of labels is triggered by data packets
 - but only if a critical threshold number of packets for a specific communication relationship is reached
 - may have a big performance impact
- hence we have dynamic assignment of labels based on data flow detection
- also called Traffic Driven

Some FEC Examples for Topology Driven

- **FEC's could be for example**

- a set of unicast packets whose network layer destination address matches a particular IP address prefix
 - MPLS application: Destination Based (Unicast) Routing
- a set of multicast packets with the same source and destination network layer address
 - MPLS application: Multicast Routing
- a set of unicast packets whose network layer destination address matches a particular IP address prefix and whose Type of Service (ToS) or DSCP bits are the same
 - MPLS application: Quality of Service
 - MPLS application: Traffic Engineering or Constraint Based Routing

L85 - Multiprotocol Label Switching

Label Distribution

- **MPLS architecture allows an LSR to distribute bindings to LSR's that have not explicitly requested them**
 - “Unsolicited Downstream” label distribution
 - usually used by Frame-Mode MPLS
- **MPLS architecture allows an LSR to explicitly request, from its next hop for a particular FEC, a label binding for that FEC**
 - “Downstream-On-Demand” label distribution
 - must be used by Cell-Mode MPLS

© 2006, D.I. Manfred Lindner

MPLS, v4.5

75

Label Binding

- **The decision to bind a particular label L to a particular FEC F**
 - is made by the LSR which is **DOWNSTREAM** with respect to that binding
 - the downstream LSR then informs the upstream LSR of the binding
 - thus labels are “downstream-assigned”
 - thus label bindings are distributed in the “downstream to upstream” direction
- **Discussion were about if**
 - labels should also be “upstream-assigned”
 - not any longer part of current MPLS-RFC

© 2006, D.I. Manfred Lindner

MPLS, v4.5

76

L85 - Multiprotocol Label Switching

Label Retention Mode

1

- **A LSR may receive a label binding**
 - for a particular FEC from another LSR, which is not next hop based on the routing table for that FEC
- **This LSR then has the choice**
 - of whether to keep track of such bindings, or whether to discard such bindings
- **A LSR supports "Liberal Label Retention Mode"**
 - if it maintains the bindings between a label and a FEC which are received from LSR's which are not its next hop for that FEC

© 2006, D.I. Manfred Lindner

MPLS, v4.5

77

Label Retention Mode

2

- **A LSR supports "Conservative Label Retention mode"**
 - If it discards the bindings between a label and a FEC which are received from LSR's which are not its next hop for that FEC
- **Liberal Label Retention mode**
 - allows for quicker adaptation to routing changes
 - LSR can switch over to next best LSP
- **Conservative Label Retention mode**
 - requires an LSR to maintain fewer labels
 - LSR has to wait for new label bindings in case of topology changes

© 2006, D.I. Manfred Lindner

MPLS, v4.5

78

L85 - Multiprotocol Label Switching

Independent versus Ordered Control

- **Independent Control:**

- each LSR may make an independent decision to assign a label to a FEC and to advertise the assignment to its neighbors
- typically used in Frame-Mode MPLS for destination based routing
- loop prevention must be done by other means (-> MPLS TTL) but there is faster convergence

- **Ordered Control:**

- label assignment proceeds in an orderly fashion from one end of a LSP to the other
- under ordered control, LSP setup may be initiated by the ingress (header) or egress (tail) MPLS Edge Router

© 2006, D.I. Manfred Lindner

MPLS, v4.5

79

Ordered Control - Egress

- in case of egress method the only LSR which can initiate the process of label assignment is the egress LSR
- a LSR knows that it is the egress for a given FEC if its next hop for this FEC is not an LSR
- this LSR will send a label advertisement to all neighboring LSR's
- a neighboring LSR receiving such a label advertisement from a interface which is the next hop to a given FEC will assign its own label and advertise it to all other neighboring LSR's
- inherent loop prevention
- slower convergence

© 2006, D.I. Manfred Lindner

MPLS, v4.5

80

L85 - Multiprotocol Label Switching

Ordered Control - Ingress

- in case of ingress method the LSR which initiates the process of label assignment is the ingress LSR
- the ingress LSR constructs a source route and pass on requests for label bindings to the next LSR
- this is done until LSR which is the end of the source route is reached
- from this LSR label bindings will flow upstream to the ingress LSR
- used for MPLS Traffic Engineering (TE)

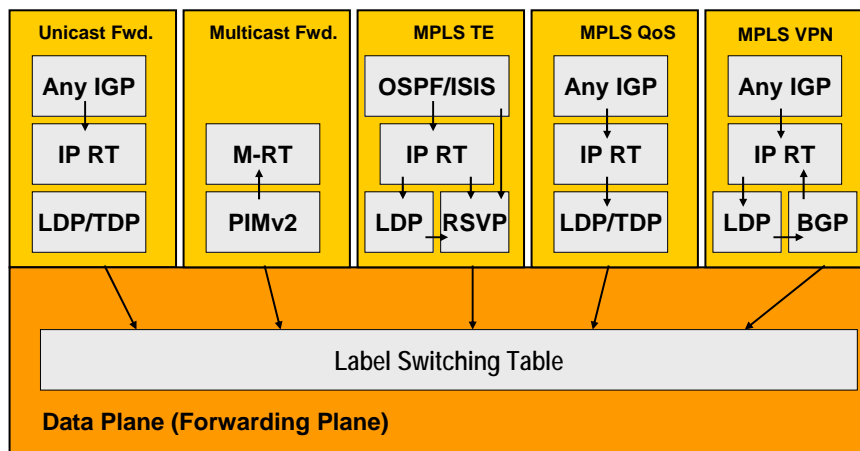
© 2006, D.I. Manfred Lindner

MPLS, v4.5

81

MPLS Applications and MPLS Control Plane

Different Control Planes



© 2006, D.I. Manfred Lindner

MPLS, v4.5

82

L85 - Multiprotocol Label Switching

Agenda

- Review Datagram- versus Virtual Call Service
- IP over WAN Problems (Traditional Approach)
- MPLS Principles
- Label Distribution Methods
 - Unsolicited Downstream
 - Downstream On Demand
 - MPLS and ATM, VC Merge Problem
- MPLS Details (Cisco)
- RFC's

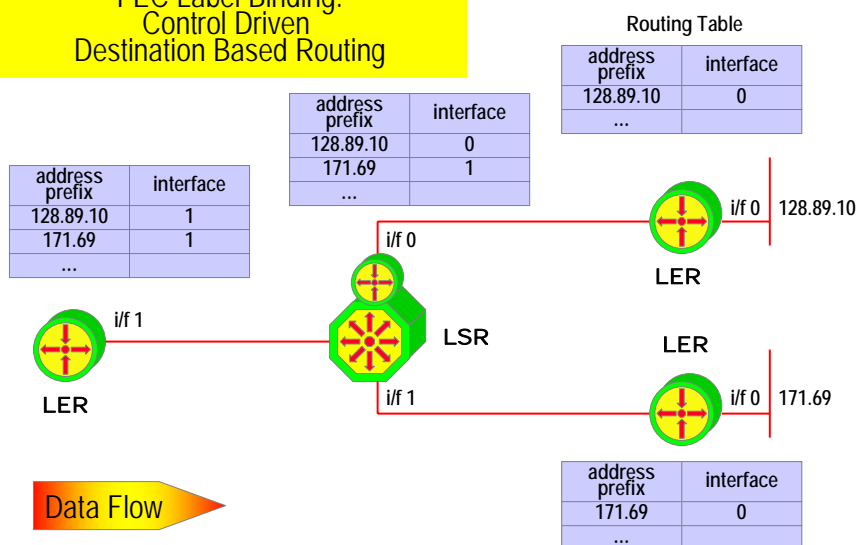
© 2006, D.I. Manfred Lindner

MPLS, v4.5

83

Routing Table Created by Routing Protocol

FEC Label Binding:
Control Driven
Destination Based Routing

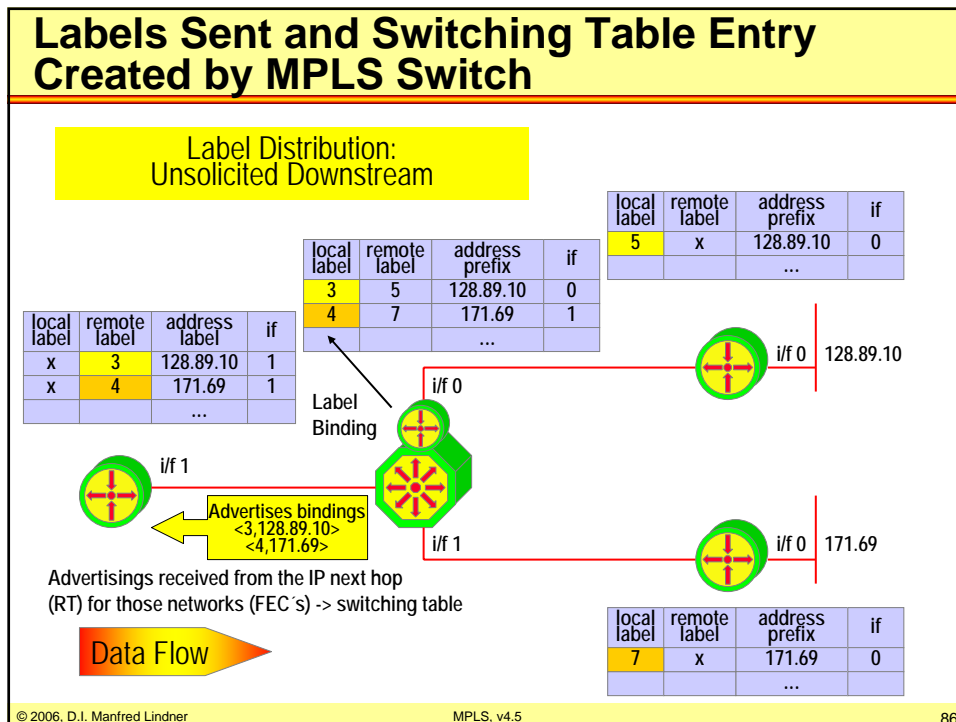
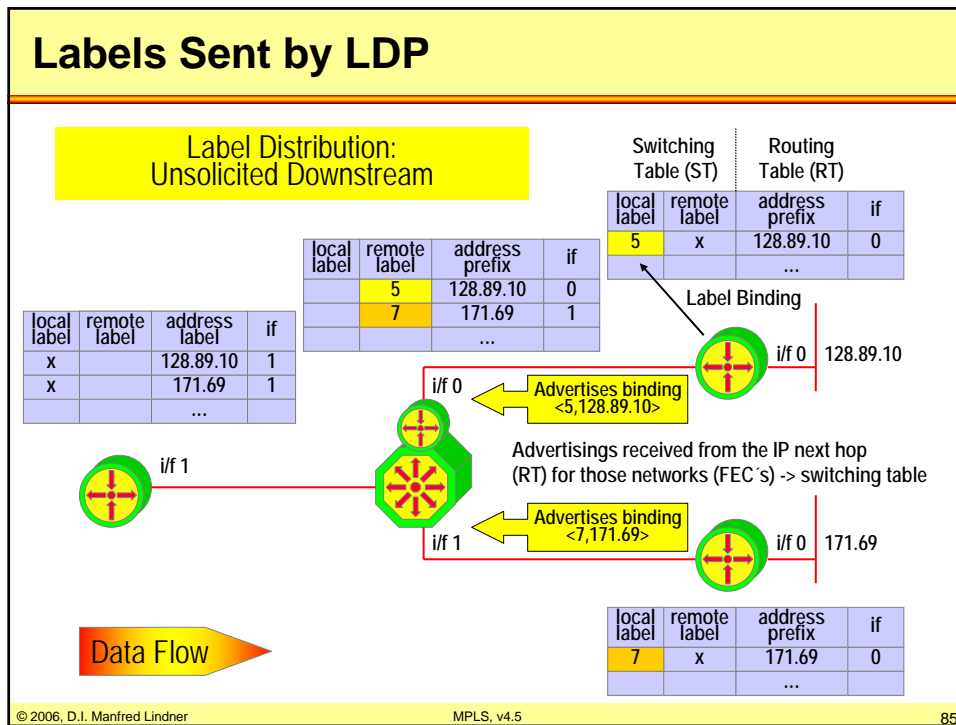


© 2006, D.I. Manfred Lindner

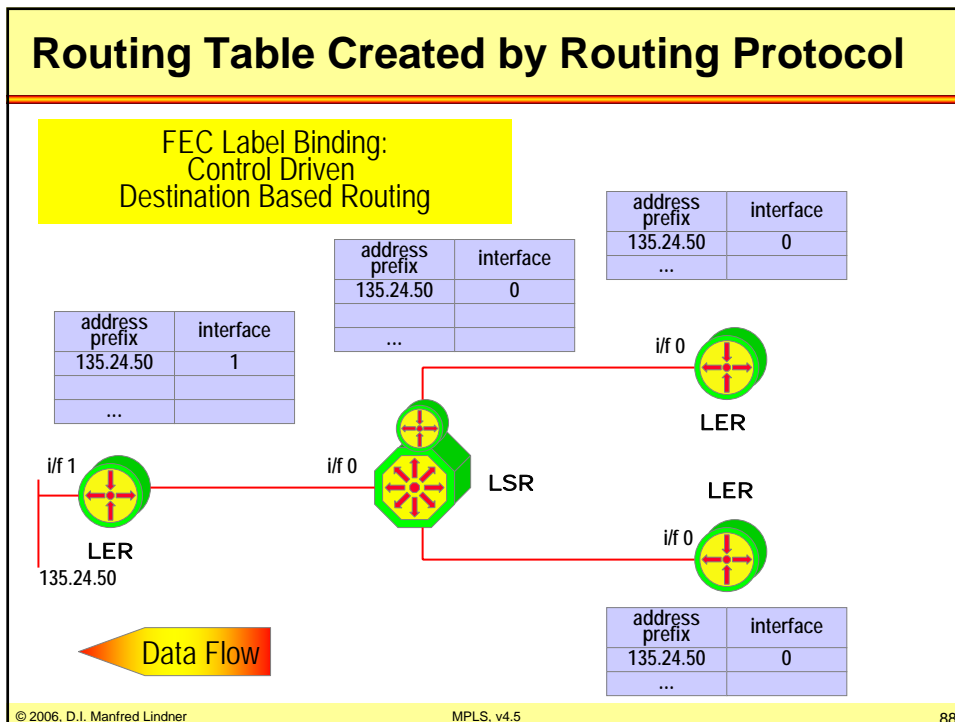
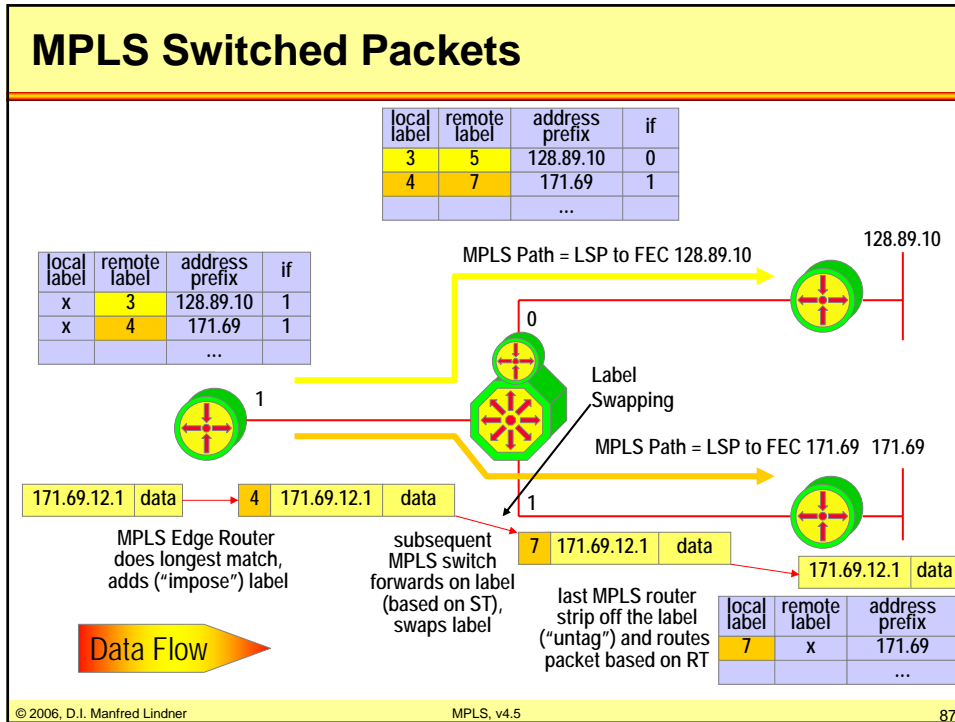
MPLS, v4.5

84

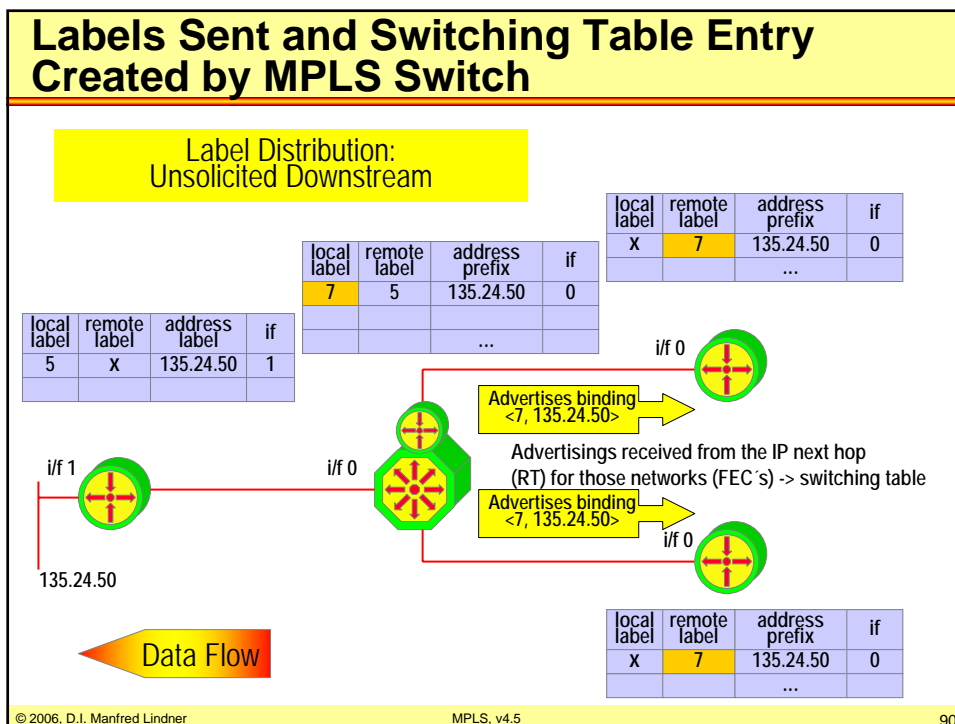
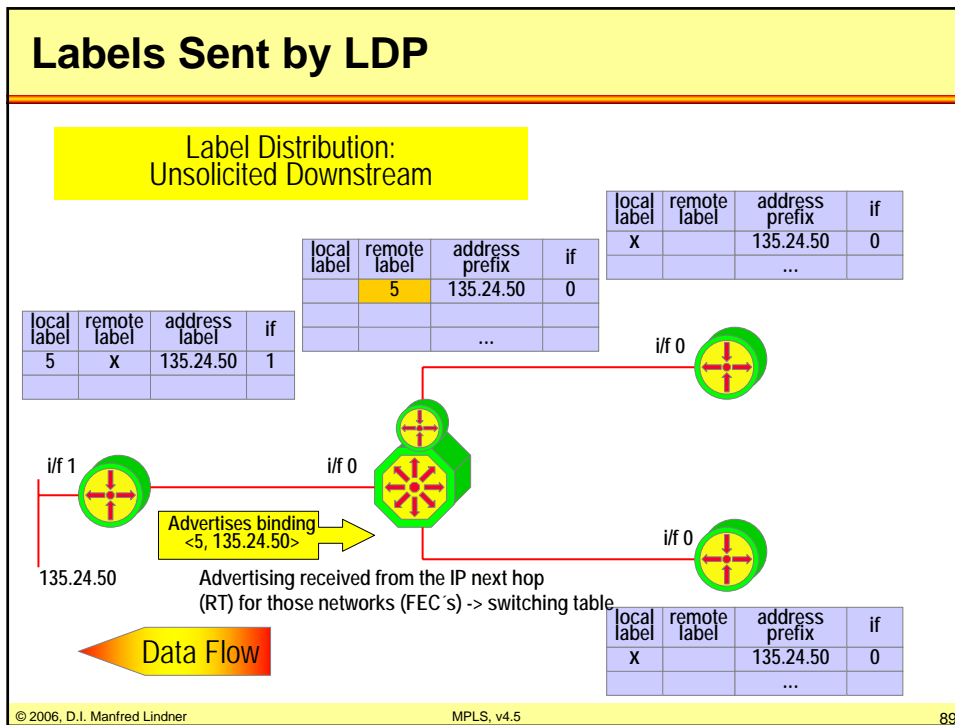
L85 - Multiprotocol Label Switching



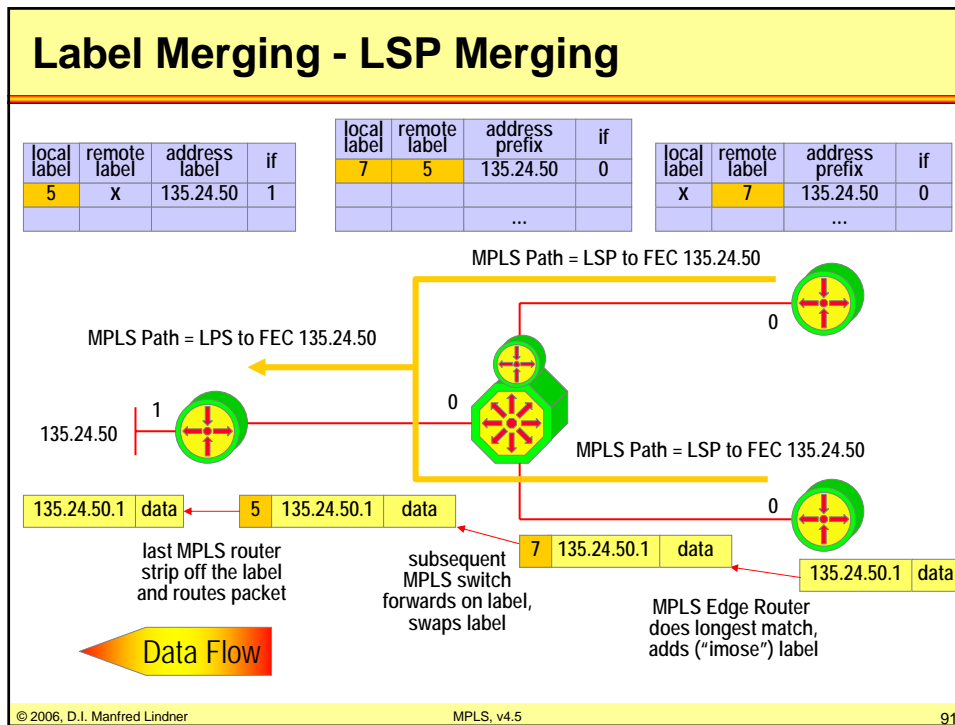
L85 - Multiprotocol Label Switching



L85 - Multiprotocol Label Switching



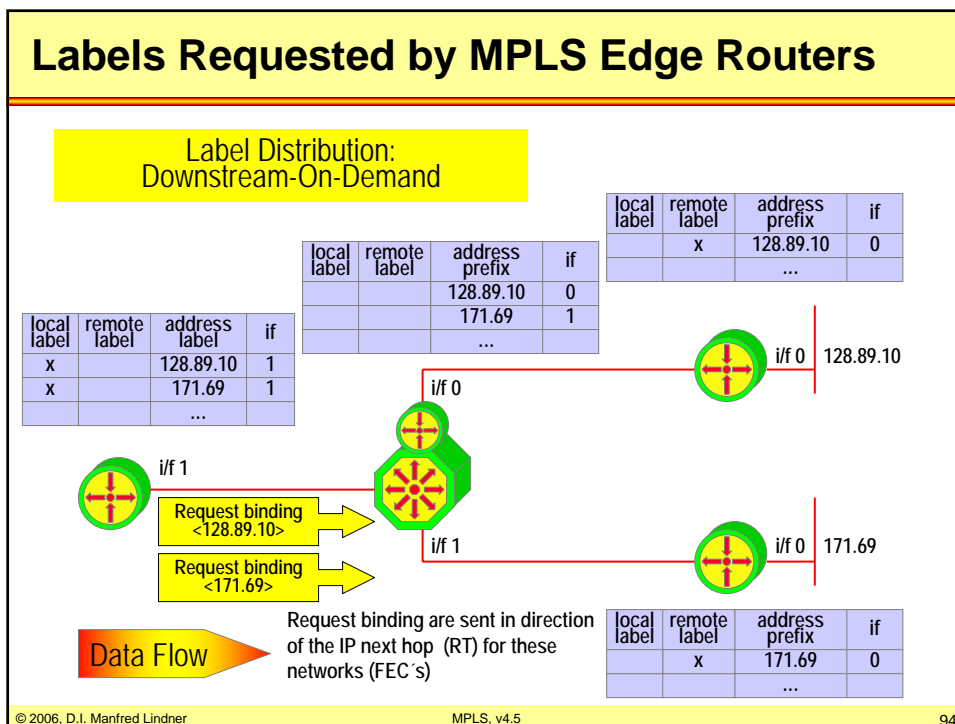
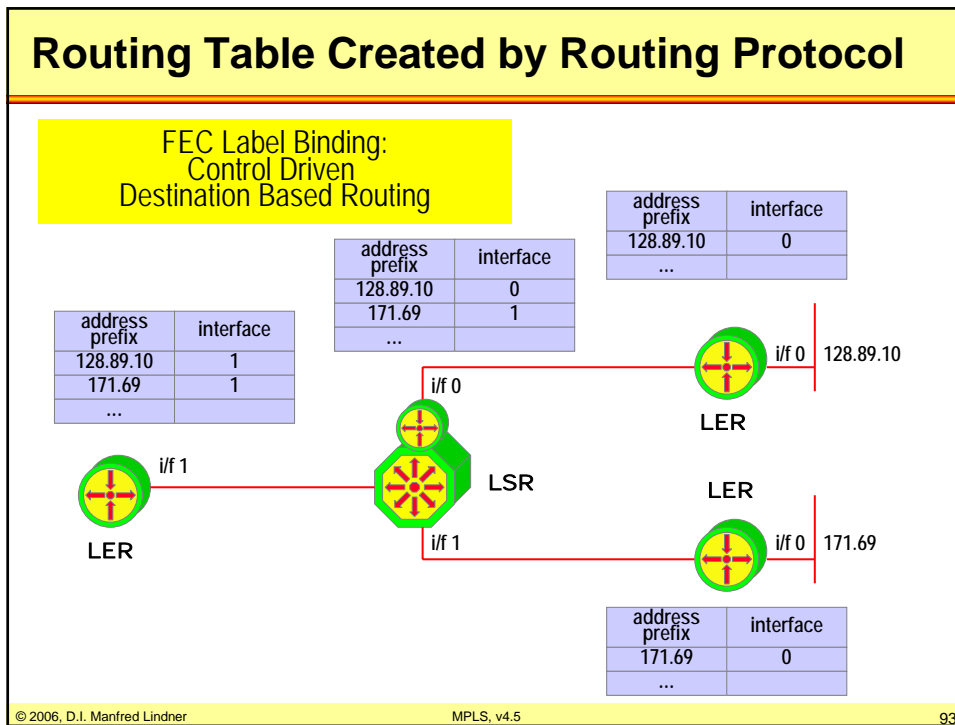
L85 - Multiprotocol Label Switching



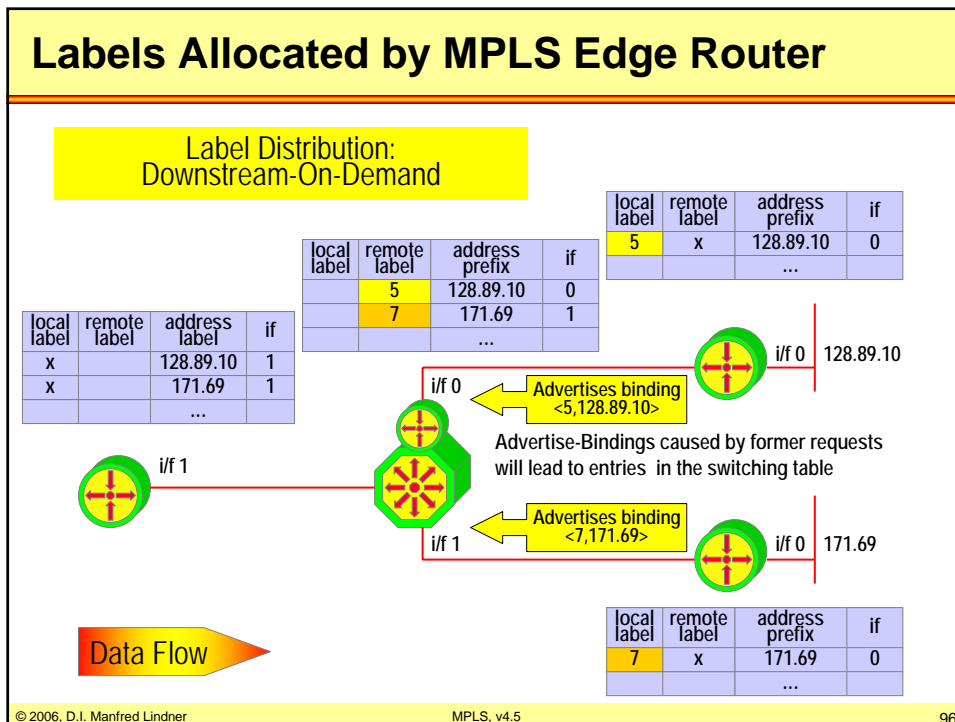
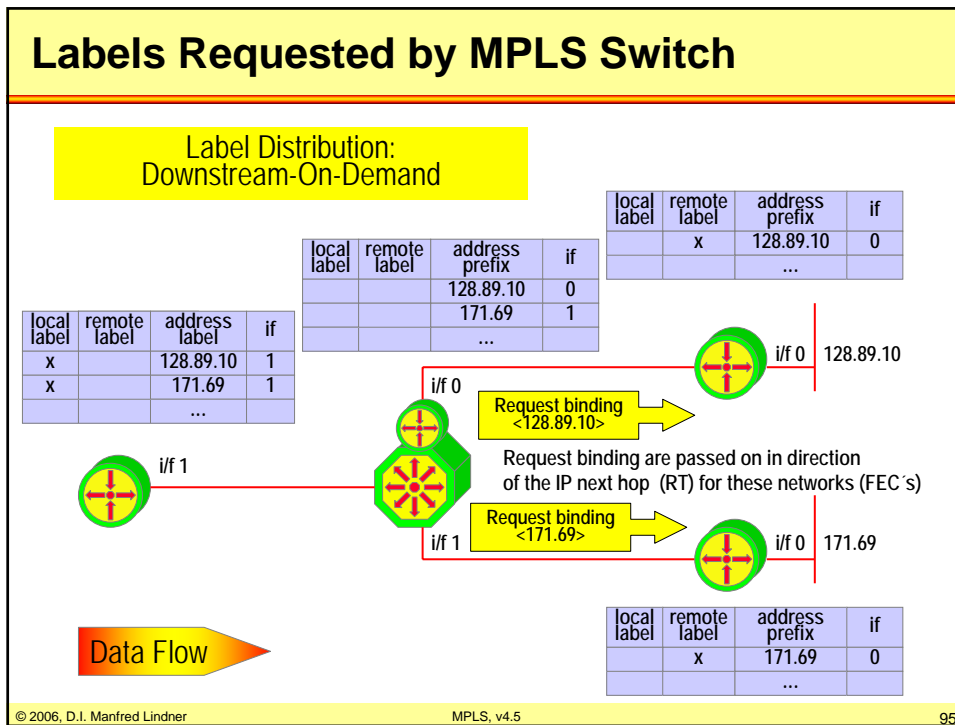
Agenda

- Review Datagram- versus Virtual Call Service
- IP over WAN Problems (Traditional Approach)
- MPLS Principles
- Label Distribution Methods
 - Unsolicited Downstream
 - Downstream On Demand
 - MPLS and ATM, VC Merge Problem
- MPLS Details (Cisco)
- RFC's

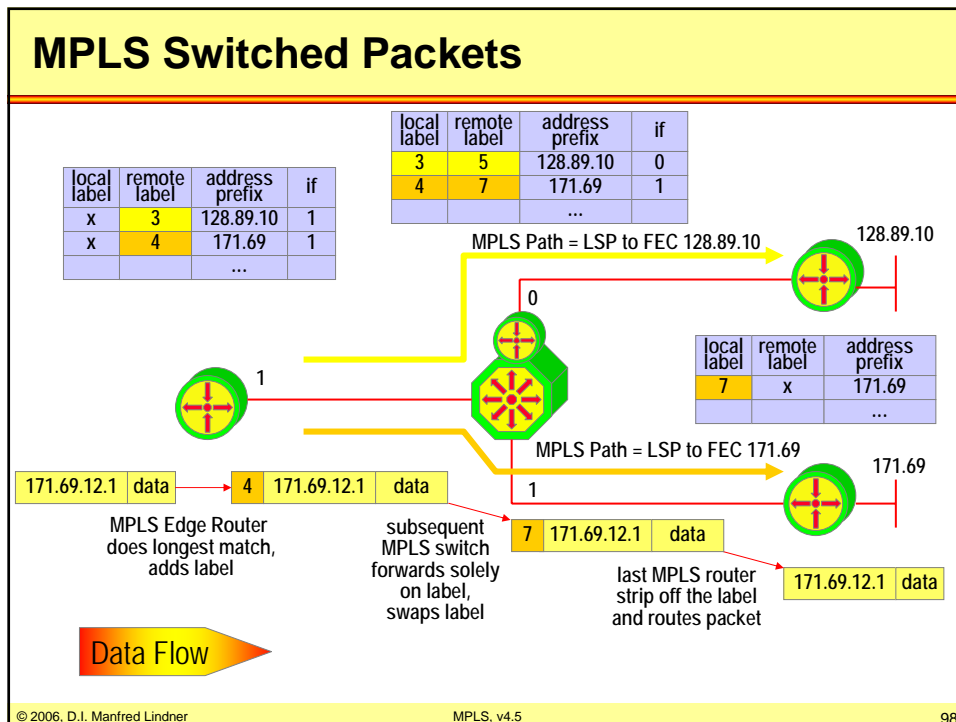
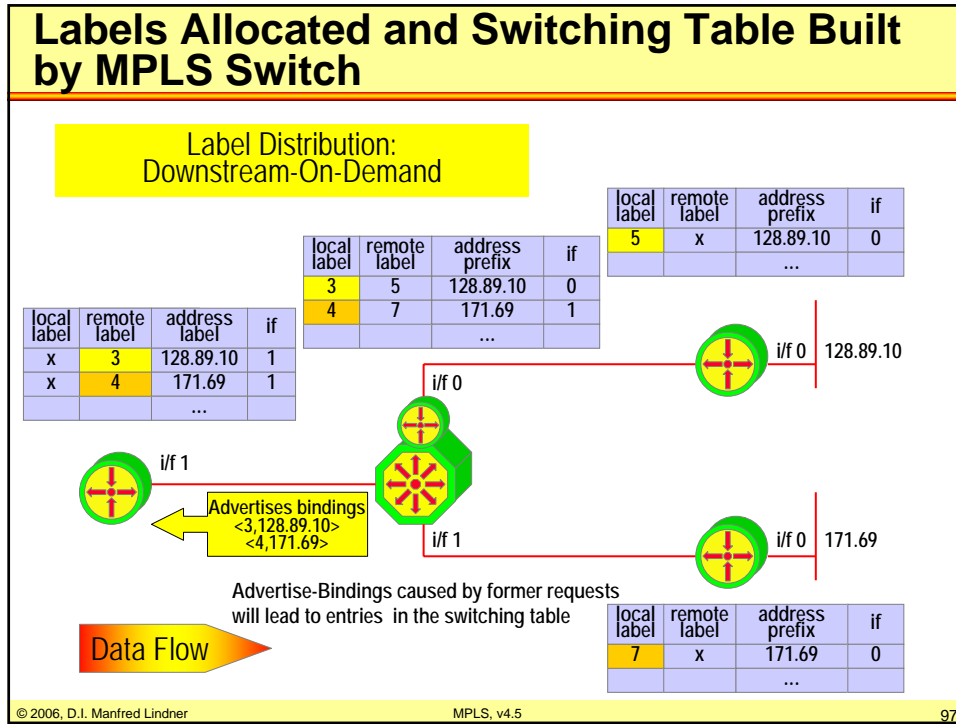
L85 - Multiprotocol Label Switching



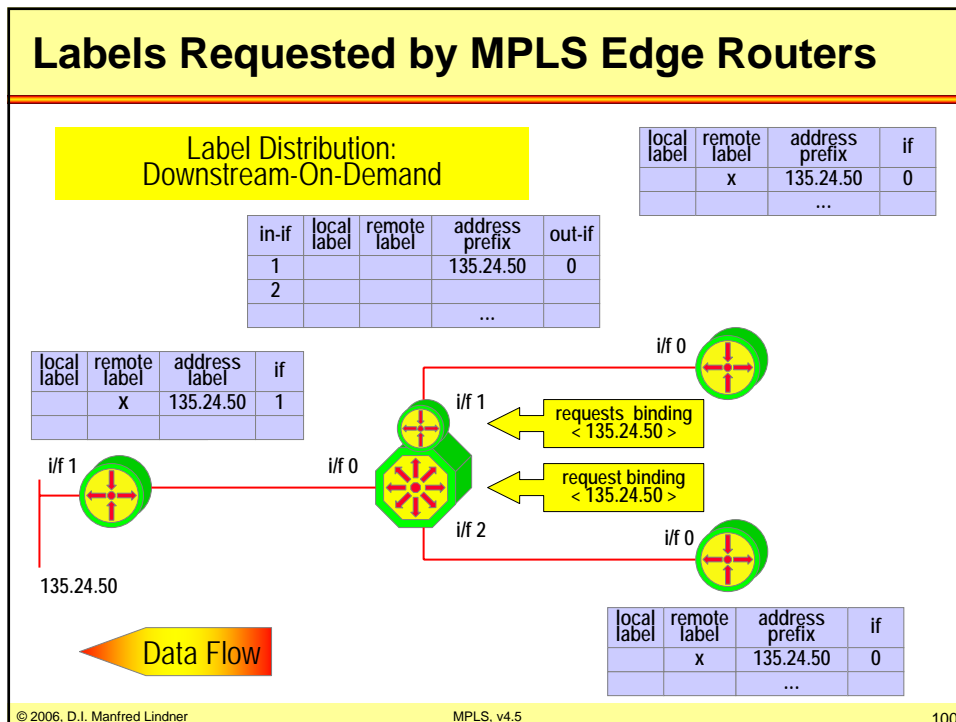
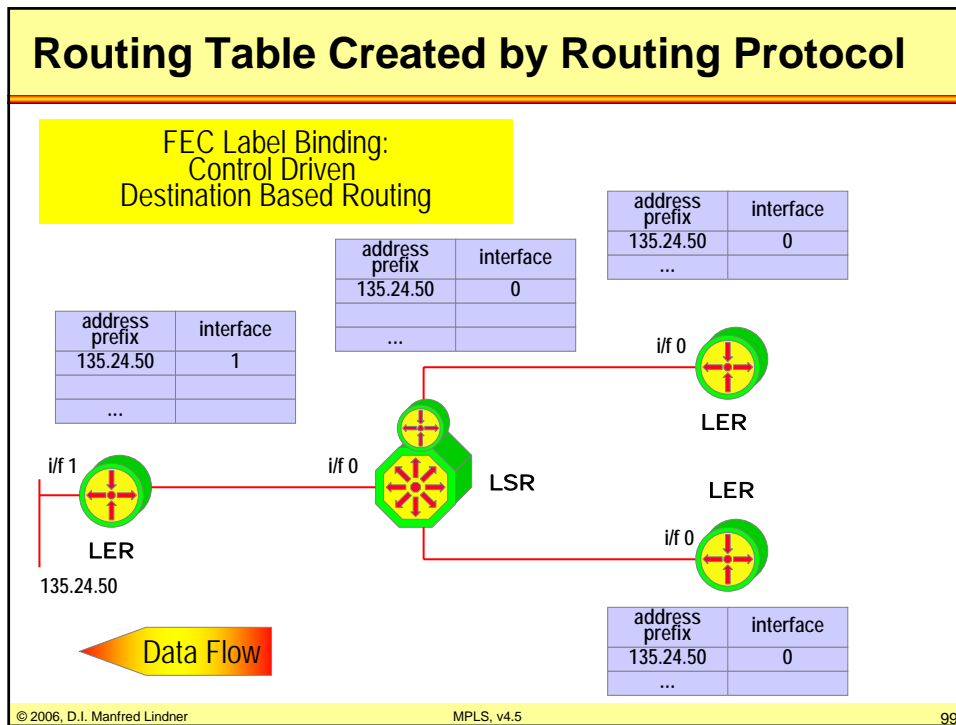
L85 - Multiprotocol Label Switching



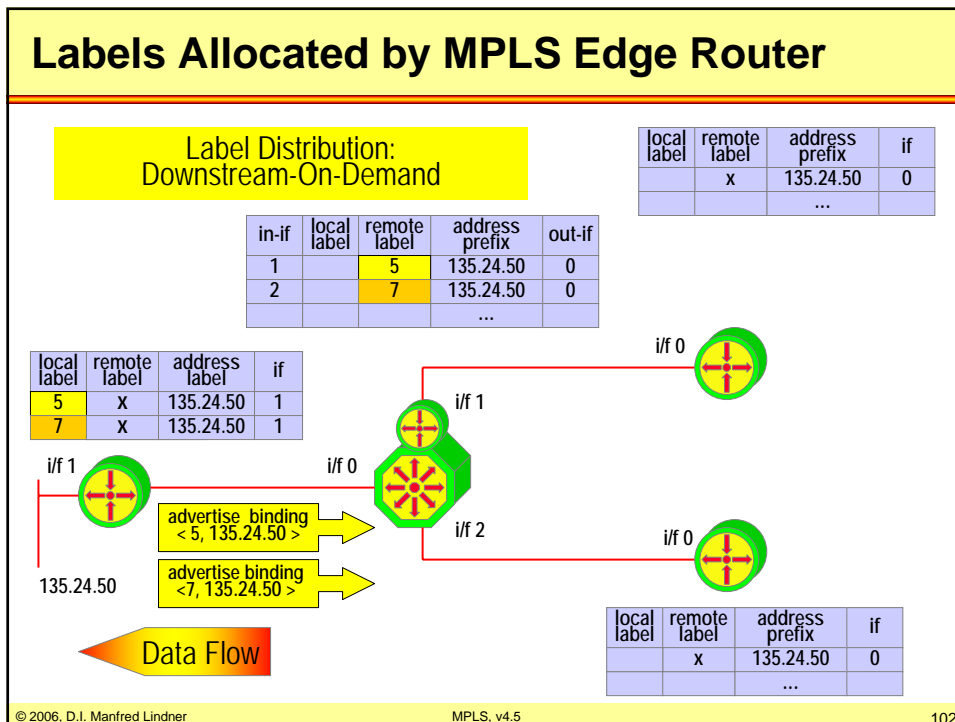
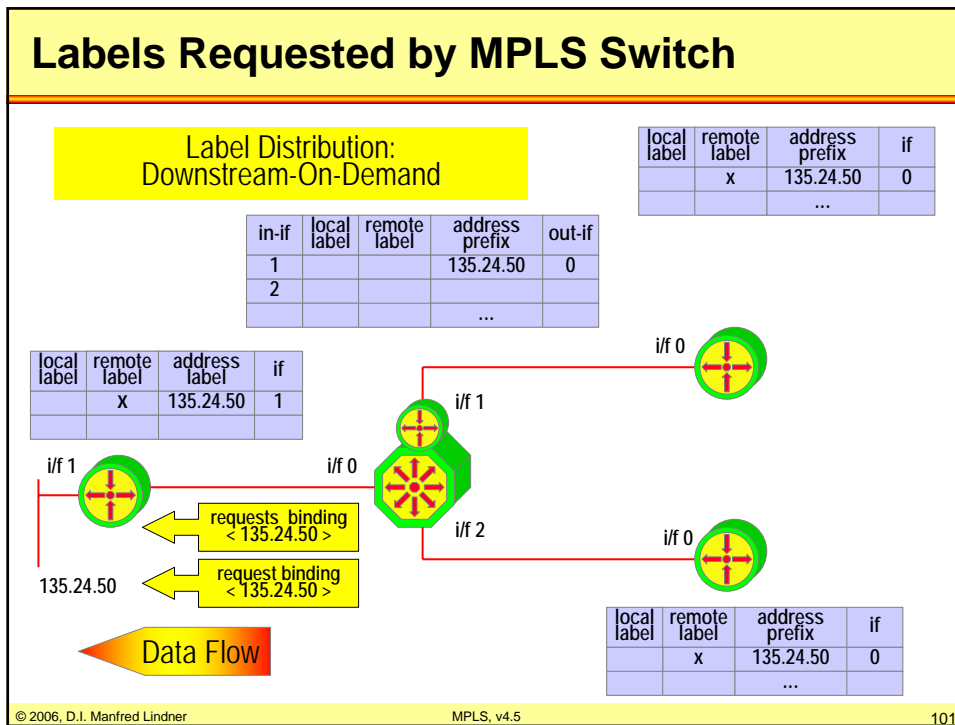
L85 - Multiprotocol Label Switching



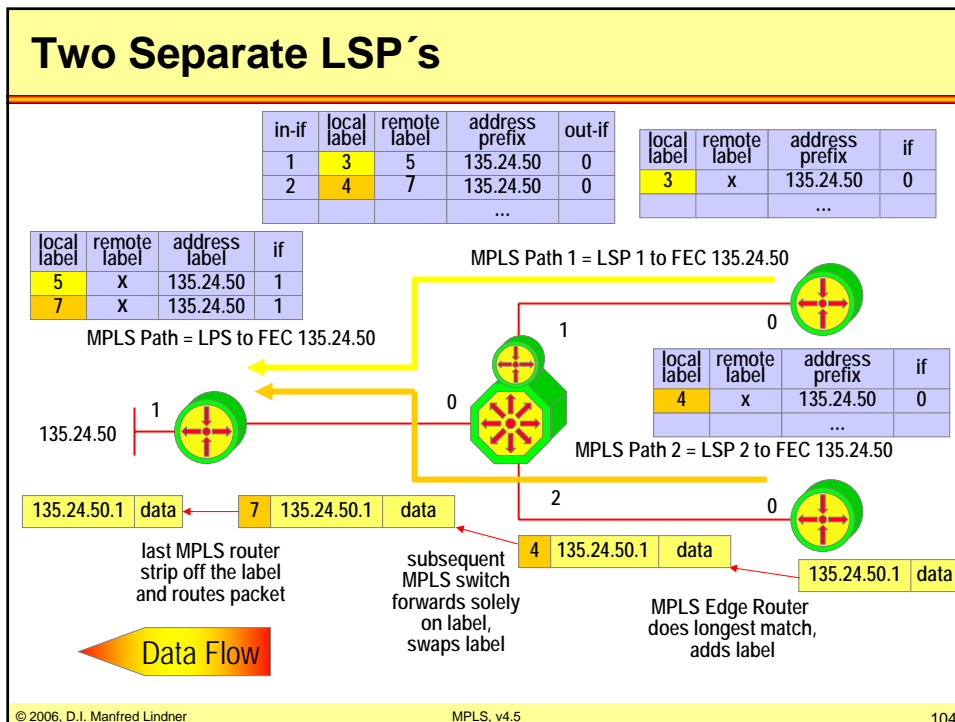
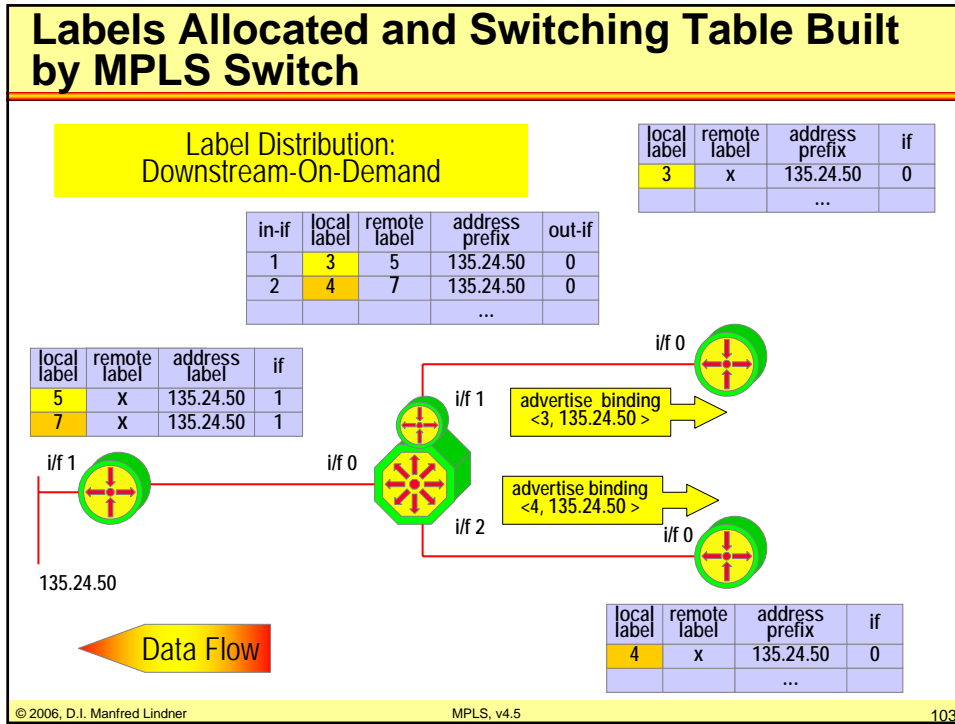
L85 - Multiprotocol Label Switching



L85 - Multiprotocol Label Switching



L85 - Multiprotocol Label Switching



L85 - Multiprotocol Label Switching

Agenda

- **Review Datagram- versus Virtual Call Service**
- **IP over WAN Problems (Traditional Approach)**
- **MPLS Principles**
- **Label Distribution Methods**
 - Unsolicited Downstream
 - Downstream On Demand
 - MPLS and ATM, VC Merge Problem
- **MPLS Details (Cisco)**
- **RFC's**

© 2006, D.I. Manfred Lindner

MPLS, v4.5

105

Label Switching and ATM

- **Can be easily deployed with ATM because ATM uses label swapping**
 - VPI/VCI is used as a label
- **ATM switches needs to implement control component of label switching**
 - ATM attached router peers with ATM switch (label switch)
 - exchange label binding information
- **Differences**
 - how labels are set up
 - label distribution -> downstream on demand allocation
 - label merging
 - in order to scale, merging of multiple streams (labels) into one stream (label) is required

© 2006, D.I. Manfred Lindner

MPLS, v4.5

106

L85 - Multiprotocol Label Switching

Label Switching and ATM

local label	remote label	address prefix	if
5	3	128.89	0
	y	...	1

ATM switch interleaves cells of different packets onto same label. That is a problem in case of AAL5 encapsulation. No problem in case of AAL3/AAL4 encapsulation because of AAL3/AAL4's inherent multiplexing capability.

© 2006, D.I. Manfred Lindner MPLS, v4.5 107

Label Distribution Solution for ATM

input i/f	local label	remote label	address prefix	output i/f
1	5	3	128.89	0
2	5	7	128.89	0

requests a label for 128.89
requests a label for 128.89
requests two labels for 128.89
returns a label to each requester

- **“Downstream On Demand” Label Distribution**

© 2006, D.I. Manfred Lindner MPLS, v4.5 108

L85 - Multiprotocol Label Switching

Label Distribution Solution for ATM

input i/f	local label	remote label	address prefix	output i/f
1	5	3	128.89	0
2	5	7	128.89	0
			...	

- **Downstream On Demand label distribution is necessary**
 - multiple labels per FEC may be assigned
 - one label per (ingress, egress) router pair
- **Label space can be reduced with VC-merge technique**

© 2006, D.I. Manfred Lindner MPLS, v4.5 109

VC Merge Technique

local label	remote label	address prefix	if
5	3	128.89	0
		...	

- **ATM switch avoids interleaving of frames**
 - VC Merge technique
 - looking for AAL5 trailers and storing corresponding cells of a frame until AAL5 trailer is seen

© 2006, D.I. Manfred Lindner MPLS, v4.5 110

L85 - Multiprotocol Label Switching

Agenda

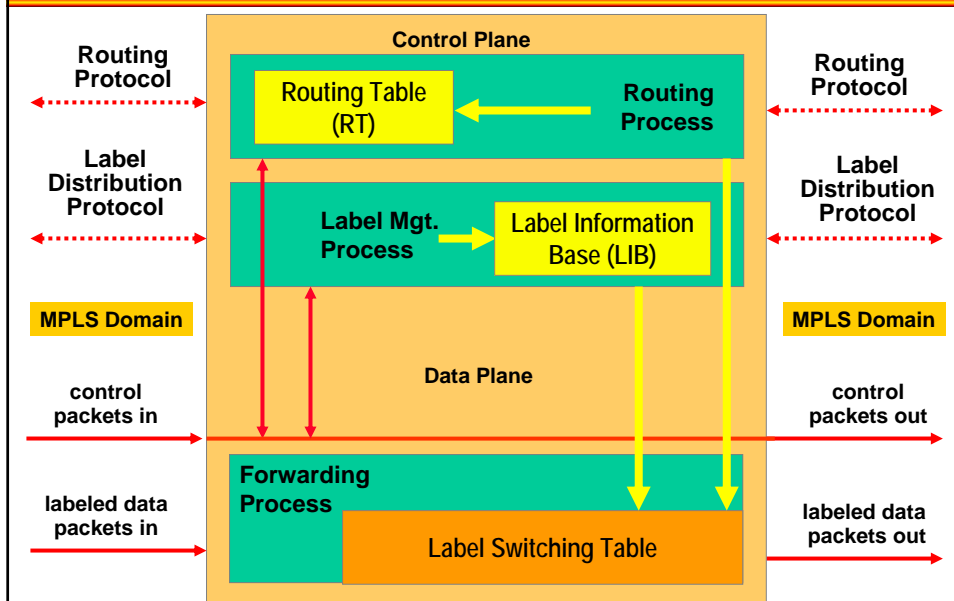
- **Review Datagram- versus Virtual Call Service**
- **IP over WAN Problems (Traditional Approach)**
- **MPLS Principles**
- **Label Distribution Methods**
- **MPLS Details (Cisco)**
 - Internal Components
 - MPLS in Action
 - TDP, LDP
 - TTL
 - Traffic Engineering
 - MPLS and BGP
- **RFC's**

© 2006, D.I. Manfred Lindner

MPLS, v4.5

111

Generic MPLS Control and Data Plane

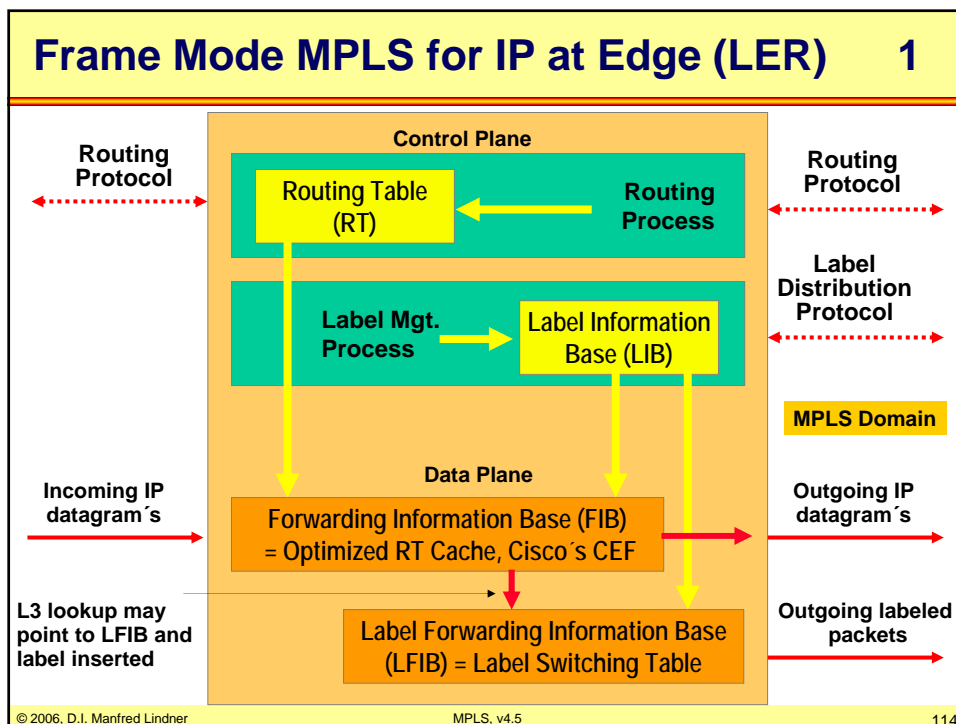
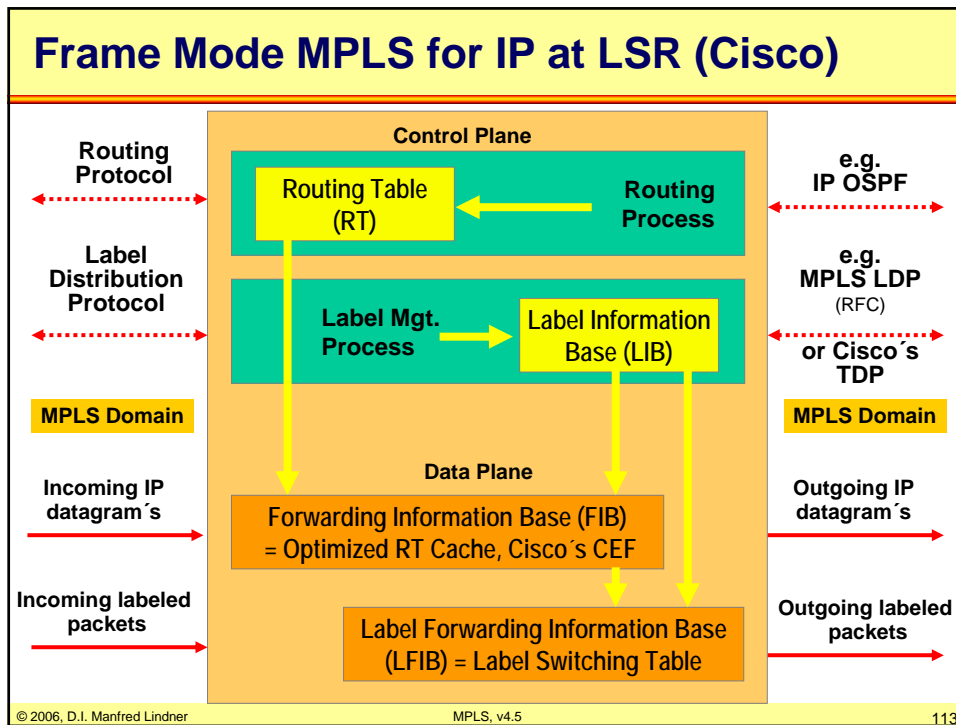


© 2006, D.I. Manfred Lindner

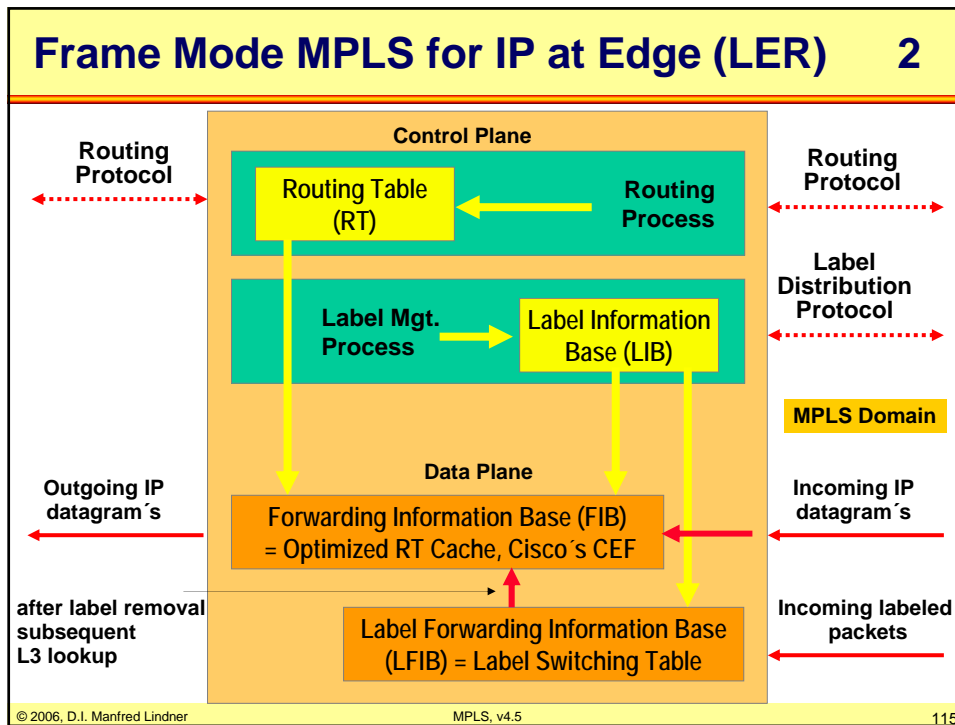
MPLS, v4.5

112

L85 - Multiprotocol Label Switching



L85 - Multiprotocol Label Switching



- ### Important Databases
- **FIB**
 - Forwarding Information Base
 - This is the CEF database at Cisco routers
 - Contains L2/L3 headers, IP addresses, labels, next hop, metric
 - The routing table is only a subset of the FIB
 - **LIB**
 - Label Information Base
 - Contains all labels and associated destinations
 - **LFIB**
 - Label Forwarding Information Base
 - Contains selected labels used for forwarding
 - Selection based on FIB
- © 2006, D.I. Manfred Lindner MPLS, v4.5 116

L85 - Multiprotocol Label Switching

Cisco Express Forwarding (CEF)

- **Requirement for MPLS**
 - Forwarding information (L2-headers, addresses, labels) are maintained in FIB for each destination
 - Newest and fastest IOS switching method
 - Critical in environments with frequent route changes and large RT's: The Internet backbone!
- **Invented to overcome Fast Switching problems:**
 - Originally Hash table, since 10.2 2-way radix-tree
 - No overlapping cache entries
 - Any change of RT or ARP cache invalidates route cache
 - First packet is always process-switched to build route cache entry
 - Inefficient load balancing when "many hosts to one server"

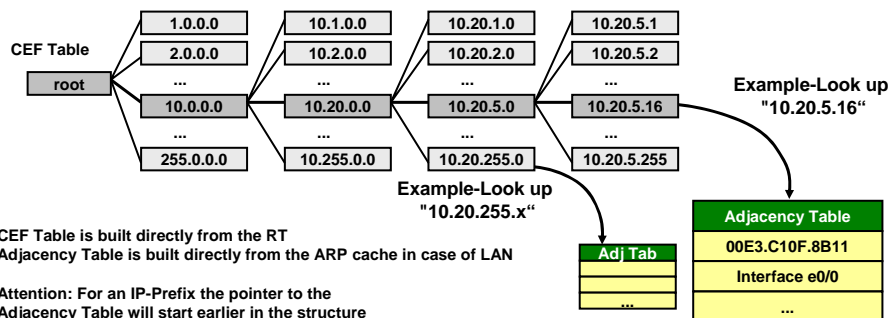
© 2006, D.I. Manfred Lindner

MPLS, v4.5

117

How CEF Works

- CEF "Fast Cache" consists of
 - CEF table: Stripped-down version of the RT (256-way mtrie data structure)
 - Adjacency table: Actual forwarding information (MAC, interfaces, ...)
- CEF cache is pre-built before any packets are switched
 - No packet needs to be process switched
- CEF entries never age out
 - Any RT or ARP changes are immediately mapped into CEF cache

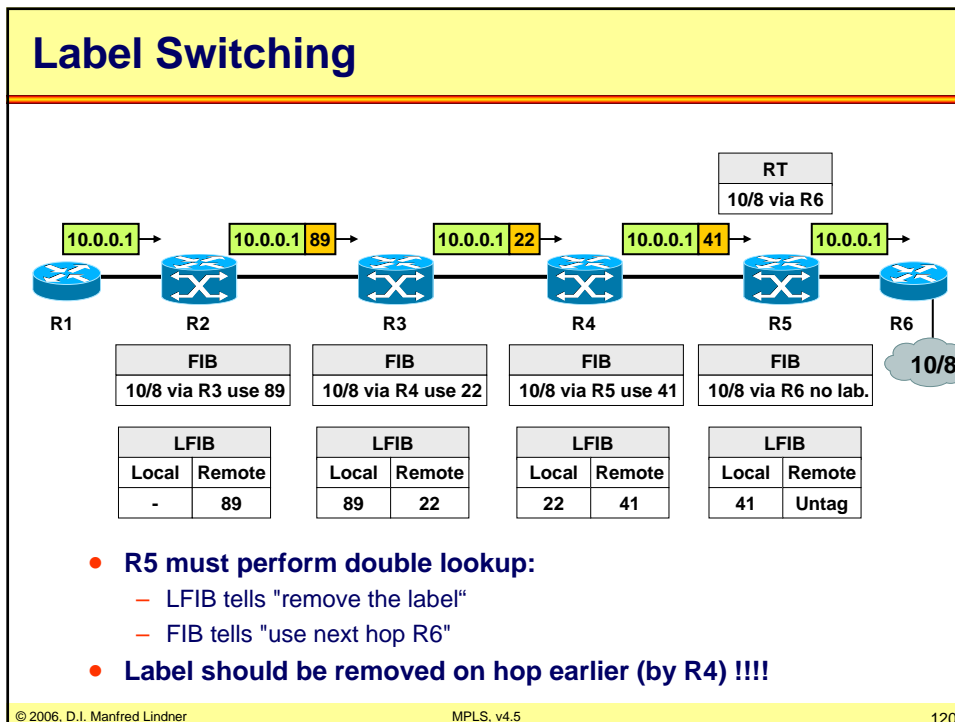
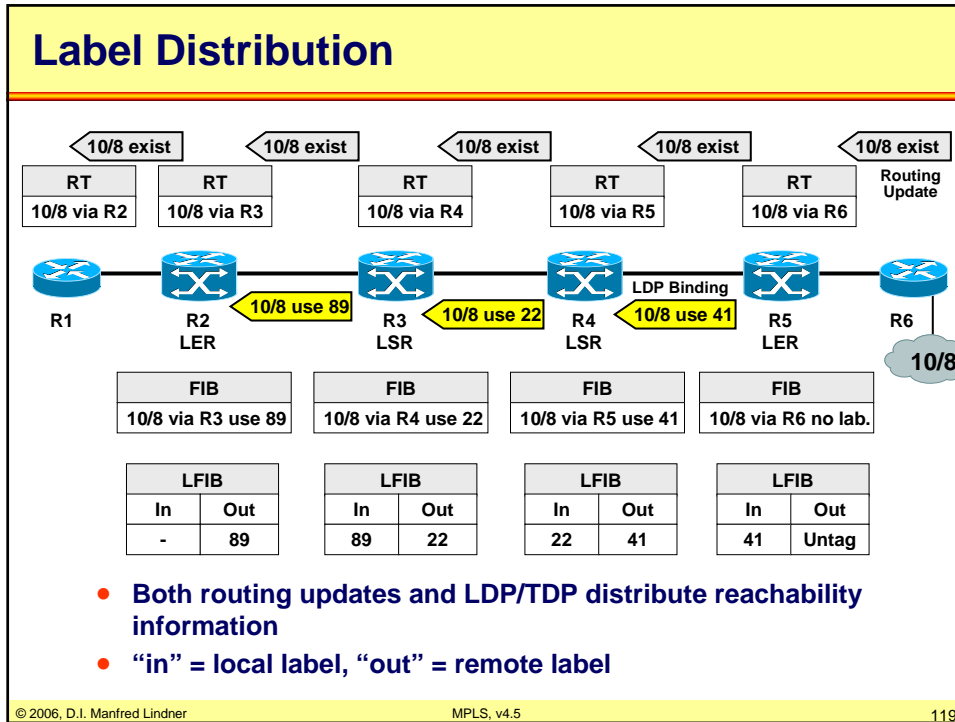


© 2006, D.I. Manfred Lindner

MPLS, v4.5

118

L85 - Multiprotocol Label Switching



L85 - Multiprotocol Label Switching

Penultimate Hop Popping 1

FIB	
10/8 via R3 use 89	

FIB	
10/8 via R4 use 22	

FIB	
10/8 via R5 do POP	

FIB	
10/8 via R6 no lab.	

LFIB	
In	Out
-	89

LFIB	
In	Out
89	22

LFIB	
In	Out
22	POP

LFIB	
In	Out
implicit null	-

- Last hop router (R5) tells penultimate router (R4) to remove label
 - "Penultimate Hop Popping" (PHP)
 - Also called "Implicit Null Label"

© 2006, D.I. Manfred Lindner
MPLS, v4.5
121

Penultimate Hop Popping 2

FIB	
10/8 via R3 use 89	

FIB	
10/8 via R4 use 22	

FIB	
10/8 via R5 do POP	

FIB	
10/8 via R6 no lab.	

LFIB	
In	Out
-	89

LFIB	
In	Out
89	22

LFIB	
In	Out
22	POP

LFIB	
In	Out
implicit null	-

- R5 only performs single lookup in FIB
- Note: PHP does not work with ATM
 - VPI/VCI cannot be removed

© 2006, D.I. Manfred Lindner
MPLS, v4.5
122

L85 - Multiprotocol Label Switching

Cisco IOS Standard Behavior

1

- Routers with packet interfaces (Frame-Mode MPLS)
 - Per-platform Label Space !!!
 - a label assigned by an LSR to a given FEC is used on all interfaces in advertisements of this LSR
 - Unsolicited Downstream Label Distribution
 - label distribution is done unsolicited
 - Liberal Label Retention Mode
 - received labels which are not used by a given LSR are still stored in the LIB
 - allows faster convergence of LSP after rerouting
 - Independent Control
 - labels are assigned by LSR independently from each other

© 2006, D.I. Manfred Lindner

MPLS, v4.5

123

Cisco IOS Standard Behavior

2

- Routers with ATM interfaces (Cell-Mode MPLS)
 - Per-interface Label Space
 - a different label for the same FEC is used on each single interface in advertisements of this LSR
 - Downstream On Demand Label Distribution
 - label distribution is done on request
 - Conservative or Liberal Label Retention Mode
 - received labels which are not used by a given LSR are not stored in the LIB in case of conservative mode
 - Independent Control

© 2006, D.I. Manfred Lindner

MPLS, v4.5

124

L85 - Multiprotocol Label Switching

Cisco IOS Standard Behavior

3

- ATM switches (Cell-Mode MPLS)
 - Per-interface Label Space
 - Downstream On Demand Label Distribution
 - Conservative Label Retention Mode
 - Ordered control
 - labels are assigned by LSR in a controlled fashion from egress to ingress

© 2006, D.I. Manfred Lindner

MPLS, v4.5

125

Agenda

- Review Datagram- versus Virtual Call Service
- IP over WAN Problems (Traditional Approach)
- MPLS Principles
- Label Distribution Methods
- MPLS Details (Cisco)
 - Internal Components
 - MPLS in Action
 - TDP, LDP
 - TTL
 - Traffic Engineering
 - MPLS and BGP
- RFC's

© 2006, D.I. Manfred Lindner

MPLS, v4.5

126

L85 - Multiprotocol Label Switching

Building Routing Tables

RT
10/8 via R2

RT
10/8 via R3

RT
10/8 via R5

RT
10/8 via R3

Assumption:
no PHP used

- **Routing Protocol**
 - establish routing tables RT in all routers
 - best path based on metric is stored in RT
- **RT**
 - contains next hop information (outgoing interface)
- **FIB**
 - additionally contains outgoing label information (which label can be used towards next hop)

© 2006, D.I. Manfred Lindner
MPLS, v4.5
127

Allocating Labels

RT
10/8 via R2

RT
10/8 via R3

RT
10/8 via R5

RT
10/8 via R3

10/8

- **R2**
 - allocates label 49 to FEC 10/8
 - stored in LIB with type local
 - stores action untag in LFIB because no other router has advertised a label for that FEC
- **Every MPLS router**
 - allocates labels for all IP destinations found in the routing table
 - this is done independently from each other
 - a label has only local significance

© 2006, D.I. Manfred Lindner
MPLS, v4.5
128

L85 - Multiprotocol Label Switching

Advertising and Receiving Labels via LDP

LIB R1		
Net	Label	Type
10/8	49	remote
-	-	-

LIB R4		
Net	Label	Type
10/8	49	remote
-	-	-

LIB R3		
Net	Label	Type
10/8	49	remote
-	-	-

- **R2**
 - advertises label 49 for FEC 10/8 to all neighbor routers
- **Per platform label allocation**
 - same label on all interfaces
 - LFIB may not contain an incoming interface (next HOP) field at that moment
- **Every neighbor MPLS router**
 - stores received label for IP destination 10/8 in the corresponding LIB

© 2006, D.I. Manfred Lindner MPLS, v4.5 129

Actions on Receiving Labels on R1

FIB R1		
Net	Next Hop	Label
10/8	R2	49

LIB R1		
Net	Label	Type
10/8	49	remote
-	-	-

LFIB R1		
Label	Action	Next Hop
-	49	R2

- **R1**
 - receives label 49 for FEC 10/8
 - label is advertised by router which is the next hop in the routing table -> therefore populates the FIB
 - LFIB is adapted to use label 49 for FEC 10/8 towards R2
 - action in LFIB has the meaning of outgoing label or remote label
 - label in LFIB has the meaning of incoming label or local label

© 2006, D.I. Manfred Lindner MPLS, v4.5 130

L85 - Multiprotocol Label Switching

Actions on Receiving of Labels from R3 and R4 on Router R2

FIB R2		
Net	Next Hop	Label
10/8	R3	22

LIB R2		
Net	Label	Type
10/8	49	local
10/8	22	remote
10/8	55	remote

LFIB R2		
Label	Action	Next Hop
49	22	R3

- **R2**
 - receives label 22 for FEC 10/8
 - this label is advertised by router which is the next hop in the routing table -> therefore populates the FIB
 - LFIB is adapted to use (swap) label 22 for FEC 10/8 towards R3
- receives label 55 for FEC 10/8
- this label is advertised by router which is not the next hop in the routing table but will be still stored in the LIB -> liberal retention mode

© 2006, D.I. Manfred Lindner MPLS, v4.5 131

Receiving of Labels from R2 and R3 on Router R4

FIB R4		
Net	Next Hop	Label
10/8	R3	22

LIB R4		
Net	Label	Type
10/8	55	local
10/8	22	remote
10/8	49	remote

LFIB R4		
Label	Action	Next Hop
55	22	R3

- **R4**
 - receives label 22 for FEC 10/8
 - this label is advertised by router which is the next hop in the routing table-> therefore populates the FIB
 - LFIB is adapted to use label 22 for FEC 10/8 towards R3
- already received label 49 for FEC 10/8
- this label is advertised by router which is not the next hop in the routing table but will be still stored in the LIB

© 2006, D.I. Manfred Lindner MPLS, v4.5 132

L85 - Multiprotocol Label Switching

Label Switching

RT 10/8 via R2 RT 10/8 via R3 RT 10/8 via R5

R1 R2 R3 R4 R5

10.0.0.1/49 10.0.0.1/22 10.0.0.1/33

Assumption: no PHP used

FIB R2		
Net	Next Hop	Label
10/8	R3	22

LIB R2		
Net	Label	Type
10/8	49	local
10/8	22	remote
10/8	55	remote

LFIB R2		
Label	Action	Next Hop
49	22	R3

- Packets of FEC 10/8 will follow the corresponding Label Switched Path

© 2006, D.I. Manfred Lindner MPLS, v4.5 133

Link Failure R2 <-> R3

RT 10/8 via R2 RT 10/8 via ? RT 10/8 via R5

R1 R2 R3 R4 R5

10.0.0.1/49

FIB R2		
Net	Next Hop	Label
10/8	R3	22

LIB R2		
Net	Label	Type
10/8	49	local
10/8	22	remote
10/8	55	remote

LFIB R2		
Label	Action	Next Hop
49	22	R3

- Routing protocol neighbors and LDP neighbors are lost after failure
 - corresponding entries in FIB, LIB and LFIB are removed
- Traffic
 - to FEC 10/8 will not be forwarded until routing table converges

© 2006, D.I. Manfred Lindner MPLS, v4.5 134

L85 - Multiprotocol Label Switching

Routing Protocol Convergence

RT		
10/8 via R2		
Net	Next Hop	Label
10/8	R4	55

LIB R2		
Net	Label	Type
10/8	49	local
10/8		
10/8	55	remote

LFIB R2		
Label	Action	Next Hop
49	55	R4

- **After routing protocol convergence**
 - R2 can switch over immediately to other LSP if alternative label advertisements were stored in LIB and labeled packets will flow again
 - Otherwise R2 must wait for new bindings and can forward packets only based on IP address in the meantime (action untag in LFIB)

- **Packets of FEC 10/8 will follow the new Label Switched Path via R4**

© 2006, D.I. Manfred Lindner
MPLS, v4.5
135

Link Failure Repair 1

RT		
10/8 via R2		
Net	Next Hop	Label
10/8	R3	-

LIB R2		
Net	Label	Type
10/8	49	local
10/8		
10/8	55	remote

LFIB R2		
Label	Action	Next Hop
49	untag	-

- **After link repair**
 - Routing protocol neighbor detection and routing table adaptation
 - R2 must wait for new bindings and can forward packets only based on IP address in the meantime (action untag in LFIB)

© 2006, D.I. Manfred Lindner
MPLS, v4.5
136

L85 - Multiprotocol Label Switching

Link Failure Repair
2

FIB R2		
Net	Next Hop	Label
10/8	R3	22

LIB R2		
Net	Label	Type
10/8	49	local
10/8	22	remote
10/8	55	remote

LFIB R2		
Label	Action	Next Hop
49	22	R3

- **After LDP session to R3 is up and binding for FEC 10/8 from R3 received**
 - Packets of FEC 10/8 will follow the corresponding Label Switched Path again

© 2006, D.I. Manfred Lindner
MPLS, v4.5
137

Agenda

- **Review Datagram- versus Virtual Call Service**
- **IP over WAN Problems (Traditional Approach)**
- **MPLS Principles**
- **Label Distribution Methods**
- **MPLS Details (Cisco)**
 - Internal Components
 - MPLS in Action
 - TDP, LDP
 - TTL
 - Traffic Engineering
 - MPLS and BGP
- **RFC's**

© 2006, D.I. Manfred Lindner
MPLS, v4.5
138

L85 - Multiprotocol Label Switching

TDP Key Facts

- **Tag Distribution Protocol (TDP)**
 - invented by Cisco
 - for distributing <label, prefix> bindings
 - enabled by default
- **Session establishment: UDP/TCP port 711**
 - Hello messages via UDP
 - destination address -> 224.0.0.2
 - well-known multicast address for all subnet routers
 - TDP session via TCP, incremental updates
- **Not compatible with LDP**
 - but can co-exist as long as two peers use the same protocol

© 2006, D.I. Manfred Lindner

MPLS, v4.5

139

LDP Key Facts

- **Label Distribution Protocol**
- **IETF standard RFC 3036**
 - descendent of Cisco's proprietary TDP
- **Same concept but port 646**
- **LDP-Identifier**
 - Router ID (4 bytes)
 - Label Space ID (2 bytes)
 - in case of per-platform label space this field is set to zero
 - note: in ATM you need a per-interface label space
- **TCP session initiated from router with highest address**

© 2006, D.I. Manfred Lindner

MPLS, v4.5

140

L85 - Multiprotocol Label Switching

LDP Message Types

- **Four basic types:**
 - Discovery (UDP):
 - getting into contact with neighbor LSR's
 - Adjacency (TCP):
 - Initialization, Keepalive and Shutdown of LDP sessions
 - Label Advertisement (TCP):
 - Label Binding - Advertisement, - Request, - Withdrawal, - Release
 - Notification (TCP):
 - Signal of Error Information, Advisory Information
- **TLV (Type/Length/Value)**
 - encoding is used for easy extension of the protocol

© 2006, D.I. Manfred Lindner

MPLS, v4.5

141

Discovery Message

- **Basic discovery of directly connected LSR's:**
 - Hello Message with targeted bit set to 0
 - UDP to port 646
 - IP multicast address "all routers on this subnet" (224.0.0.2)
- **Extended discovery of non-directly connected LSR's:**
 - Hello Message with targeted bit set to 1 (Targeted Hello)
 - UDP to port 646
 - IP unicast address of neighbor
 - used e.g. in case of MPLS Traffic Engineering
- **After discovery**
 - LDP session is created running on top of TCP
 - well known port 646

© 2006, D.I. Manfred Lindner

MPLS, v4.5

142

L85 - Multiprotocol Label Switching

Adjacency Messages

- **Adjacency**

- Initialization

- negotiates
 - protocol version (current version = 1)
 - label advertisement discipline
 - » Unsolicited Downstream = 0
 - » Downstream-on-Demand = 1
 - keepalive time

- Keepalive

- maintains LDP session

© 2006, D.I. Manfred Lindner

MPLS, v4.5

143

Label Advertisement Messages

- **Label Advertisement**

- Label Mapping

- advertise a binding between a FEC and a label

- Label Withdrawing

- reverse the mapping process
- e.g. if FEC is not longer valid because address prefix has been removed from the routing table

- Label Release

- issued by a LSR which has previously received a label mapping and no longer has a need for that mapping

- Label Request / Label Request Abort

- for Downstream-on-Demand method
- abort is used to revoke a request before it has been satisfied

© 2006, D.I. Manfred Lindner

MPLS, v4.5

144

L85 - Multiprotocol Label Switching

Agenda

- **Review Datagram- versus Virtual Call Service**
- **IP over WAN Problems (Traditional Approach)**
- **MPLS Principles**
- **Label Distribution Methods**
- **MPLS Details (Cisco)**
 - Internal Components
 - MPLS in Action
 - TDP, LDP
 - TTL
 - Traffic Engineering
 - MPLS and BGP
- **RFC's**

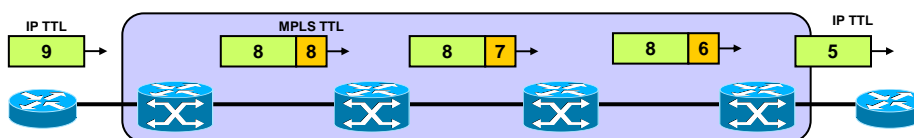
© 2006, D.I. Manfred Lindner

MPLS, v4.5

145

Normal TTL Usage

- **Loop detection**
 - LDP and TDP basically rely on IGP loop detection, therefore no additional tasks are necessary for MPLS control packets
 - Additionally a TTL field in the MPLS header prevents endless routing of MPLS data packets
- **TTL Propagation:**
 - IP TTL is copied into MPLS header
 - Done by Ingress LSR (LER)
 - MPLS TTL decremented by every LSR
 - Egress LSR copies MPLS-TTL back to IP TTL
 - Enabled by default on Cisco routers



© 2006, D.I. Manfred Lindner

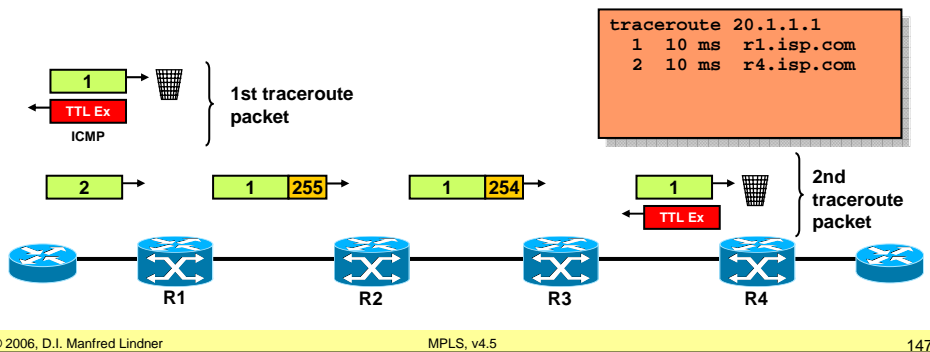
MPLS, v4.5

146

L85 - Multiprotocol Label Switching

Disable TTL Propagation

- No TTL copying between IP and MPLS header
- Ingress router assigns MPLS TTL 255
- Core routers are hidden
 - E. g. traceroute fails to show them

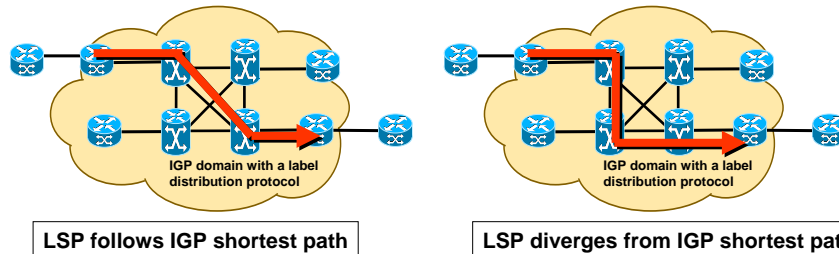


Agenda

- Datagram- versus Virtual Call Service
- Problems with Traditional Approach
- MPLS Principles
- Label Distribution Methods
- MPLS Details (Cisco)
 - Internal Components
 - MPLS in Action
 - TDP, LTP
 - TTL
 - Traffic Engineering
 - MPLS and BGP
- RFC's

L85 - Multiprotocol Label Switching

Label Switch Path (LSP)



- **Normal MPLS Destination Based Routing**
 - FEC is determined in LSR-ingress
 - LSP's derive from IGP routing information
- **If LSP's should diverge from IGP shortest path**
 - LSP Explicit Routing (LSP Tunnel) is necessary
 - MPLS Traffic Engineering

© 2006, D.I. Manfred Lindner

MPLS, v4.5

149

Traffic Engineering via LSP - Tunnels

- **Explicit Routing:**
 - Source Routing
 - Constraint-Based Path Selection Algorithm
 - similar to ATM PNNI
 - OSPF / IS-IS extension for flooding of resources / policy information
 - traffic class, resource requirements and the available network resources (bandwidth)
 - RSVP as the mechanism for establishing LSP's
 - uses new RSVP objects in PATH and RESV messages
 - Explicit-Route (ERO) in Path, Label found in RSV
 - Usage of ER-LSP's in the forwarding table
 - label stack

© 2006, D.I. Manfred Lindner

MPLS, v4.5

150

L85 - Multiprotocol Label Switching

Explicit Routing 1

- **LSR-1 request an explicit LSP to LSR-5:**
 - LSR-1, LSR-2, LSR-4, LSR-5
- **The request travels hop-by-hop**
 - using RSVP PATH messages

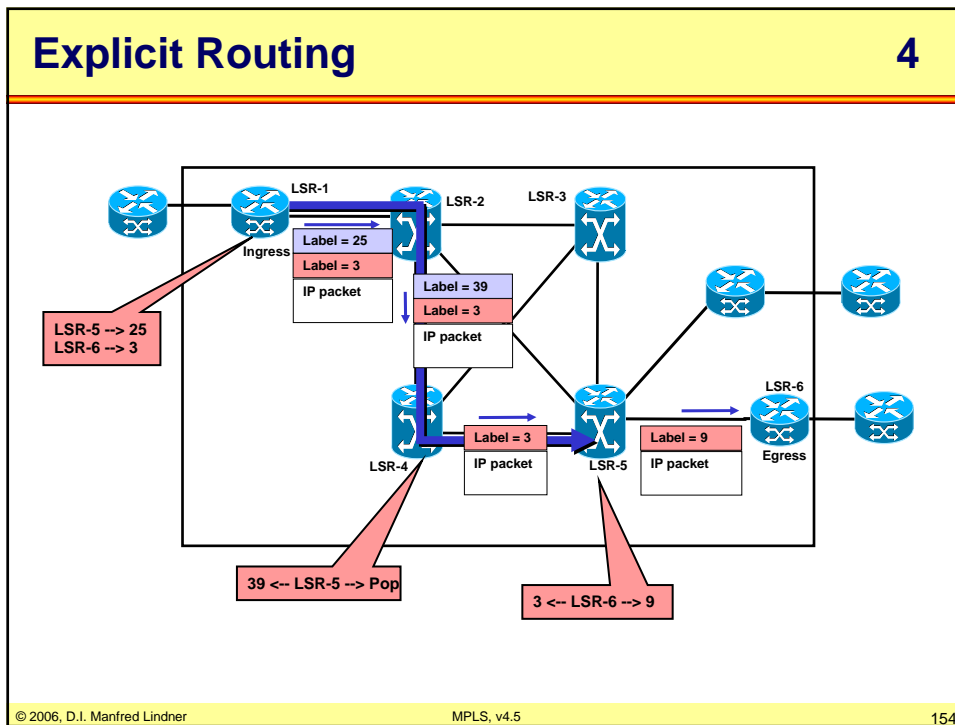
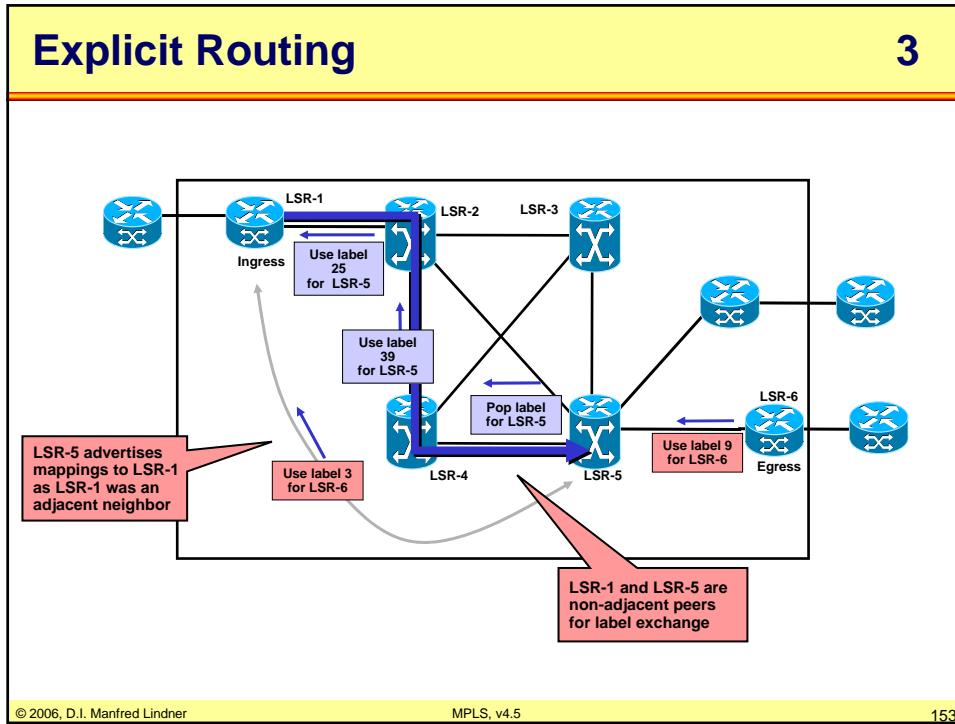
© 2006, D.I. Manfred Lindner
MPLS, v4.5
151

Explicit Routing 2

- **When the request reaches the egress point labels are advertised back to the ingress LSR**
 - via RSVP RESV messages

© 2006, D.I. Manfred Lindner
MPLS, v4.5
152

L85 - Multiprotocol Label Switching



L85 - Multiprotocol Label Switching

Agenda

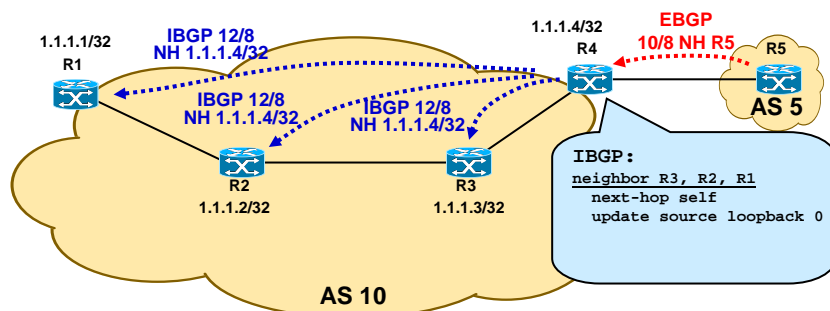
- Review Datagram- versus Virtual Call Service
- IP over WAN Problems (Traditional Approach)
- MPLS Principles
- Label Distribution Methods
- MPLS Details (Cisco)
 - Internal Components
 - MPLS in Action
 - TDP, LDP
 - TTL
 - Traffic Engineering
 - MPLS and BGP
- **RFC's**

© 2006, D.I. Manfred Lindner

MPLS, v4.5

155

BGP Standard Behavior



- **Good style: Use loopback addresses and next hop self**
 - BUT: Full mesh IBGP !!!
 - BUT: Each router has full routing table !!!
- **IGP is used to propagate loopback addresses**
 - 1.1.1.1/32, 1.1.1.2/32, 1.1.1.3/32, and 1.1.1.4/32
- **Note: BGP Synchronization Off**
 - Otherwise IBGP routes would never be copied into the routing table
 - IBGP updates would only be propagated by PE-router if this network is reachable via IGP

© 2006, D.I. Manfred Lindner

MPLS, v4.5

156

L85 - Multiprotocol Label Switching

MPLS and BGP
1

- **FEC = Next Hop**
 - Only EBGP routers must learn all external routes
 - Internal routers do not require the external networks to be in the routing table
 - packets to external networks are labeled with the label to reach the BGP next hop
- **IBGP sessions only between PE-routers**

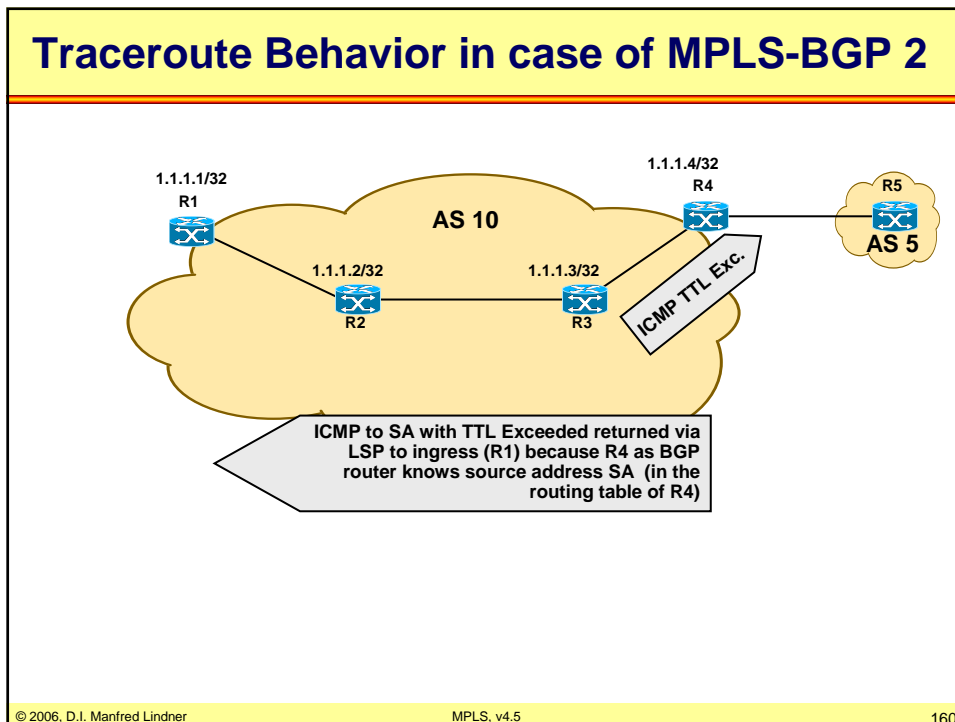
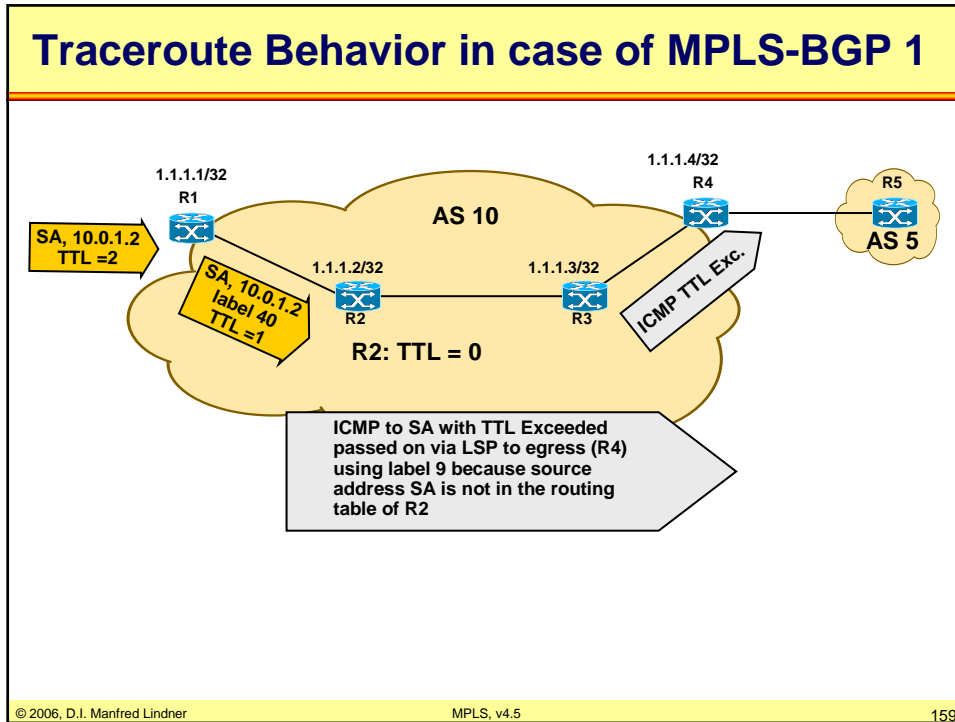
© 2006, D.I. Manfred Lindner MPLS, v4.5 157

MPLS and BGP
2

- **FEC = Next Hop**
 - Only EBGP routers must learn all external routes
 - Internal routers do not require the external networks to be in the routing table
 - packets to external networks are labeled with the label to reach the BGP next hop
- **IBGP sessions only between PE-routers**

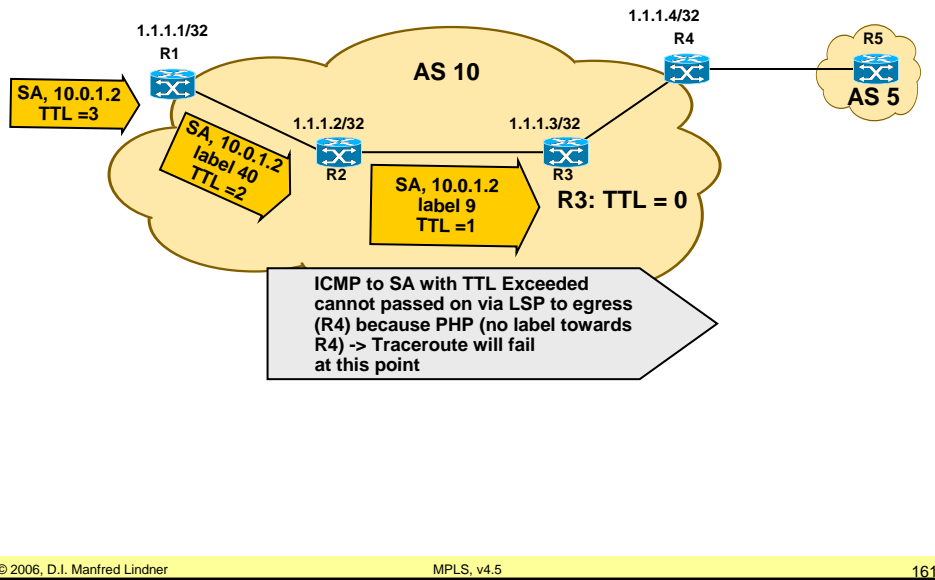
© 2006, D.I. Manfred Lindner MPLS, v4.5 158

L85 - Multiprotocol Label Switching

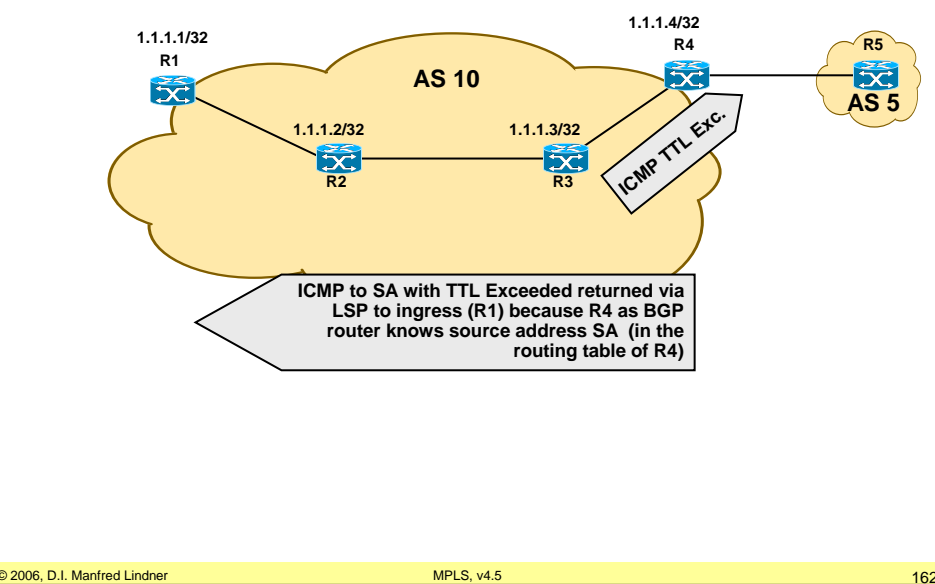


L85 - Multiprotocol Label Switching

Traceroute Behavior in case of MPLS-BGP 3



Traceroute Behavior in case of MPLS-BGP 2



L85 - Multiprotocol Label Switching

Agenda

- **Review Datagram- versus Virtual Call Service**
- **IP over WAN Problems (Traditional Approach)**
- **MPLS Principles**
- **Label Distribution Methods**
- **MPLS Details (Cisco)**
- **RFC's**

© 2006, D.I. Manfred Lindner

MPLS, v4.5

163

RFC References

1

- **RFC 3031**
 - Multiprotocol Label Switching Architecture
- **RFC 3032**
 - MPLS Label Stack Encoding
- **RFC 3036**
 - LDP Specification
- **RFC 3063**
 - MPLS Loop Prevention Mechanism
- **RFC 3270**
 - MPLS Support of Differentiated Services

© 2006, D.I. Manfred Lindner

MPLS, v4.5

164

L85 - Multiprotocol Label Switching

RFC References

2

- **RFC 3443**
 - Time To Live (TTL) Processing in MPLS
- **RFC 3469**
 - Framework for Multi-Protocol Label Switching (MPLS)-based Recovery
- **RFC 3478**
 - Graceful Restart Mechanism for Label Distribution Protocol
- **RFC 3479**
 - Fault Tolerance for the Label Distribution Protocol (LDP)